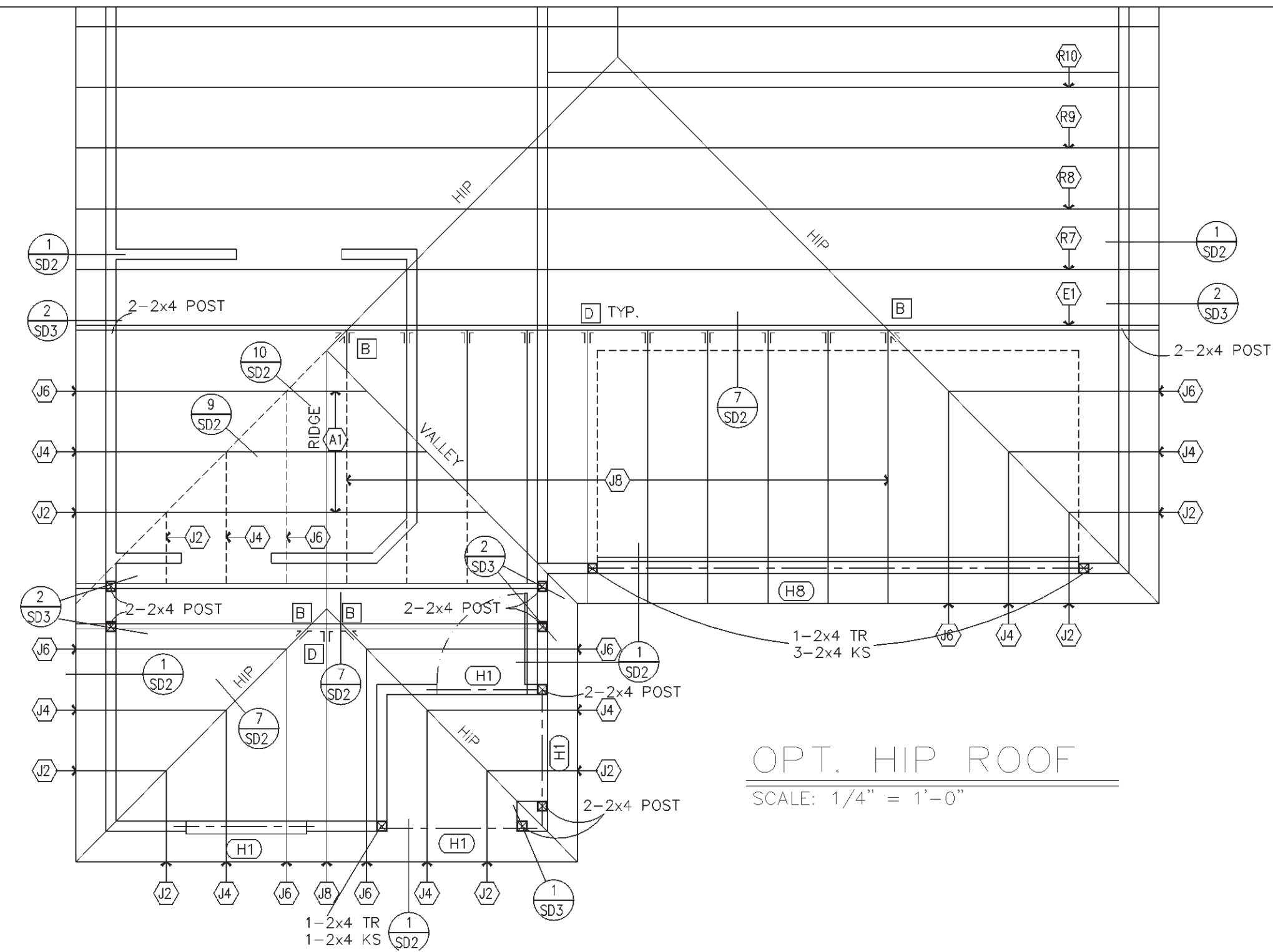


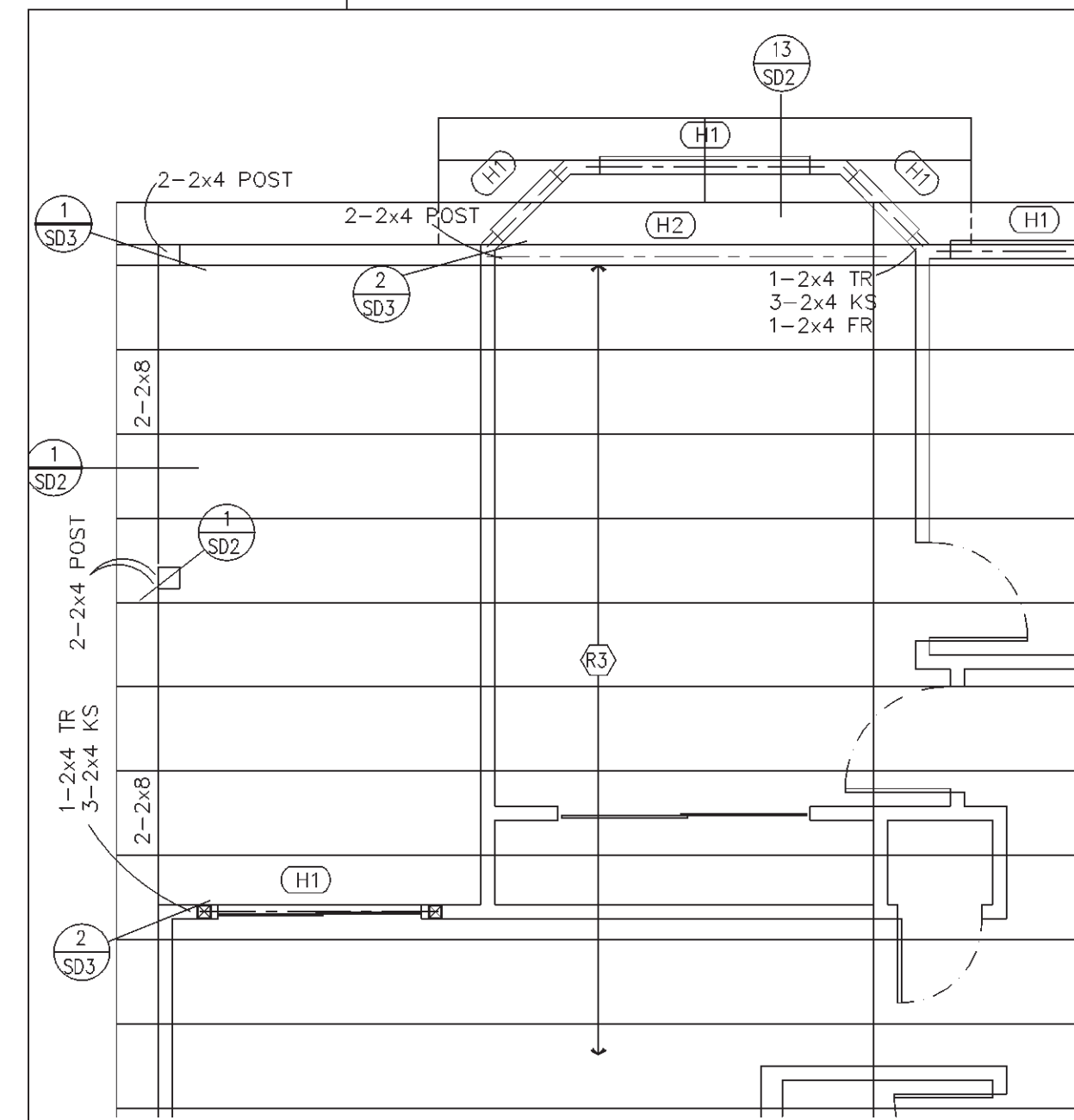
ROOF FRAMING PLAN
SCALE: 1/4" = 1'-0"

NOTICE:
EVEN THOUGH IT IS NOT REQUIRED BY ENGINEERING, THE FRAMER SHALL INSTALL 1x4 LET-IN BRACING. THE BRACING SHALL BE INSTALLED EACH WAY AT OR NEAR THE CORNERS OF EXTERIOR WALLS.

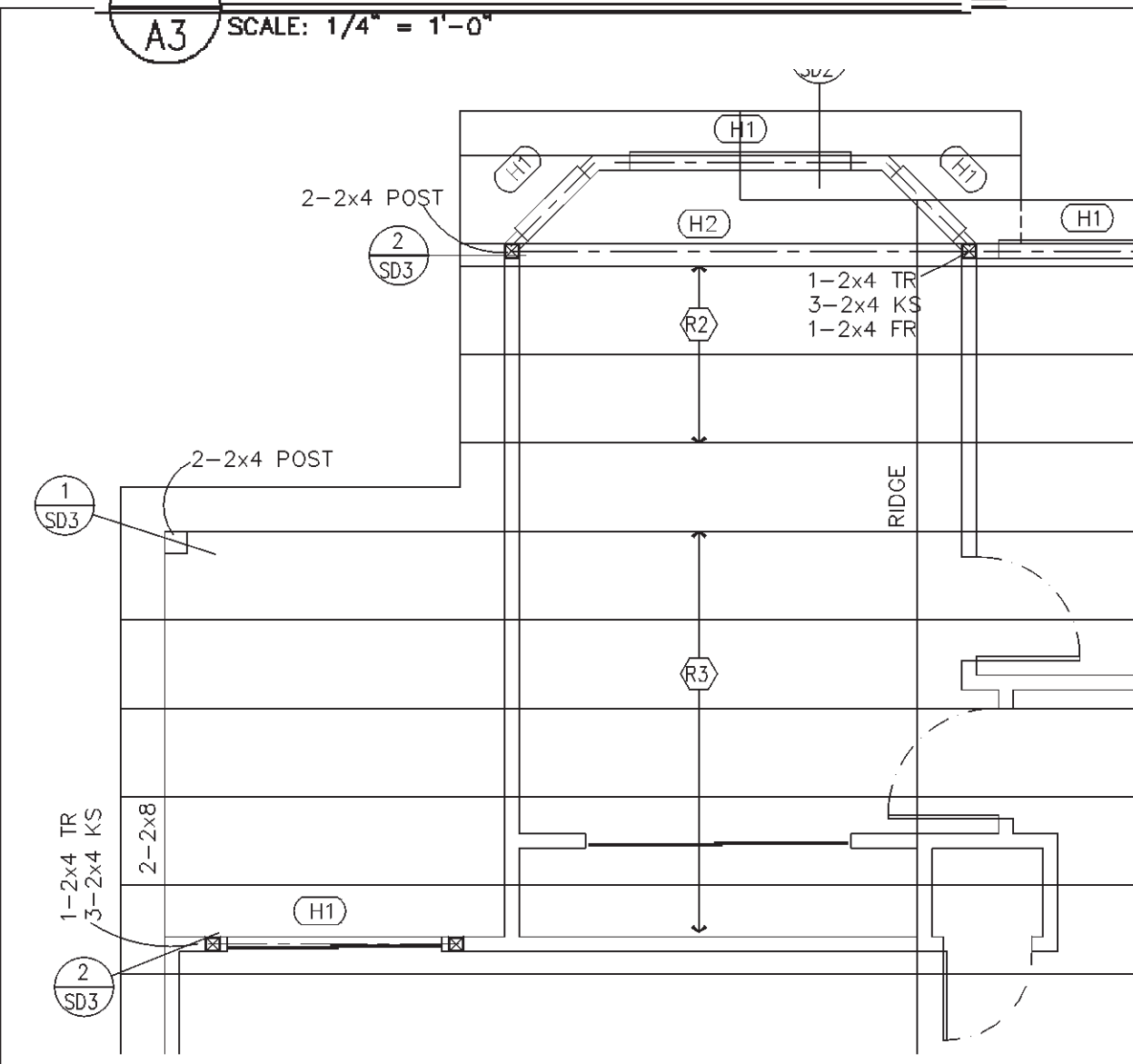
NOTICE:
EVEN THOUGH IT IS NOT REQUIRED BY ENGINEERING, IN ADDITION TO THOSE SPECIFIED ON THE ROOF FRAMING PLAN, THE FRAMER SHALL INSTALL SIMPSON DTC CLIPS AT ALL OTHER TRUSS/TOP PLATE CONDITIONS



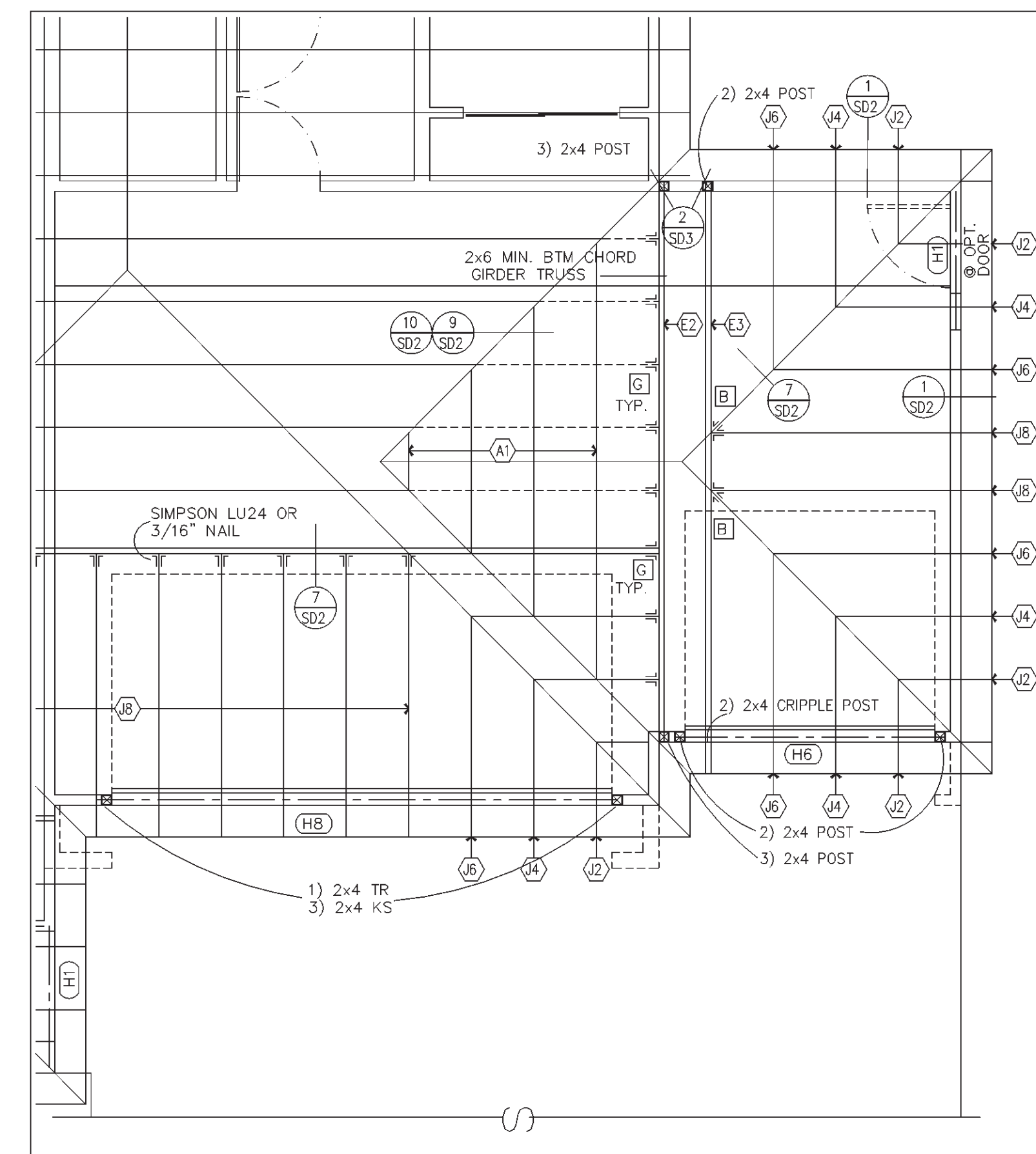
OPT. HIP ROOF
SCALE: 1/4" = 1'-0"



1 ROOF FRAMING @ OPT. PATIO EXTENSION & BAY
SCALE: 1/4" = 1'-0"



2 ROOF @ OPT. PATIO & BAY
SCALE: 1/4" = 1'-0"



3 3 CAR GARAGE ROOF FRAMING
SCALE: 1/4" = 1'-0"

- GENERAL INFORMATION**
- REFER TO GENERAL NOTES (SHEET G1) AND FLOOR PLAN (SHEET A2) FOR ADDITIONAL INFORMATION
 - USE SIMPSON H2.5 @ EA. TRUSS/JOIST AND EVERY OTHER STUD. IF SPAN EXCEEDS 22'-0" AT UNCLOSED AREAS AND GARAGES, USE ONE ANCHOR PER TRUSS/JOIST AND ONE ANCHOR PER STUD. FRAMING ANCHOR OF TYPE THAT ENGAGES BOTH PLATES (FRAMING ANCHOR AT STUD MAY BE OMITTED IF PLYWOOD OR EQUAL SHEATHING IS USED WITH NAILS TO TOP PLATE, EXCEPT UNCLOSED AREAS AND GARAGE.)
 - ALL TRUSSES TO BE DESIGNED AND MFG'D BY AN ARIZONA APPROVED FABRICATOR. TRUSS CALCULATIONS SHALL BE MADE AVAILABLE AT TIME OF INSPECTION.
 - PROVIDE ALL BLOCKING AND BRACING PER ALL APPLICABLE CODES AND/OR TRUSS MFG. SPECIFICATIONS - UNO
 - CONTRACTOR TO PROVIDE 2x4 RIDGE POLES AS REQUIRED FOR TILED ROOF AREAS

KEYNOTES

No.	DESCRIPTION
1	2-2x4 WOOD POST @ 2x4 WALLS, TYP. U.N.O.
2	2-2x6 WOOD POST @ 2x6 WALLS, TYP. U.N.O.
3	2x LEDGER
4	CRICKET
5	SCUPPER - 6x6x16" LONG
6	ROOF VENTS
7	NOT USED

HEADER SCHEDULE

SYM.	SIZE	SYM.	SIZE	SYM.	SIZE
(H1)	2-2x6	(H2)	4x12	(H15)	3-1/8x16 GLB
(H2)	2-2x8	(H3)	6x10	(H16)	5-1/8x12 GLB
(H3)	3-2x6	(H4)	6x12	(H17)	5-1/8x13-1/2 GLB
(H4)	2-2x10	(H5)	1-1/8x10-1/2 GLB	(H18)	5-1/8x16 GLB
(H5)	3-2x8	(H6)	3-1/8x12 GLB	(H19)	5-1/8x16-1/2 GLB
(H6)	2-2x12	(H7)	1-1/8x13-1/2 GLB		
(H7)	4x10	(H8)	3-1/8x14 GLB		

HANGER SCHEDULE

(A)	SIMPSON A35 OR A35F @ 24" O.C.
(B)	SIMPSON LTHJ HANGER (OR EQUAL)
(C)	SIMPSON THA29 (OR EQUAL)
(D)	SIMPSON LUS24 (OR EQUAL)
(E)	SIMPSON HU26-2 (OR EQUAL)
(F)	SIMPSON THJA26 (OR EQUAL)
(G)	SIMPSON HUS26 (OR EQUAL)
(H)	SIMPSON MST60 (OR EQUAL) & NAIL @ BTM. OF TRUSS BTM CORD & ADJACENT WALL TOP PLATE, CENTERED
(I)	SIMPSON U26 (OR EQUAL)

TRUSS KEY

(A1)	2x6 OVERFRAMING
(E1)	PRE-FAB GIRDER TRUSSES - SEE CALC'S FOR COINCIDING INFORMATION
(E3)	PRE-FAB GIRDER TRUSSES - SEE TRUSS CALC'S FOR COINCIDING INFORMATION
(G1)	GABLE END TRUSS - SEE TRUSS CALC'S FOR COINCIDING INFORMATION
(G2)	GABLE END TRUSS - SEE TRUSS CALC'S FOR COINCIDING INFORMATION
(G3)	GABLE END TRUSS - SEE TRUSS CALC'S FOR COINCIDING INFORMATION
(G4)	GABLE END TRUSS - SEE TRUSS CALC'S FOR COINCIDING INFORMATION
(J1)	JACK TRUSS - SEE TRUSS CALC'S FOR COINCIDING INFORMATION
(J8)	JACK TRUSS - SEE TRUSS CALC'S FOR COINCIDING INFORMATION
(R2)	PRE-FAB TRUSSES @ 24" O.C. - SEE TRUSS CALC'S FOR COINCIDING INFORMATION
(R3)	PRE-FAB TRUSSES @ 24" O.C. - SEE TRUSS CALC'S FOR COINCIDING INFORMATION
(R5)	PRE-FAB TRUSSES @ 24" O.C. - SEE TRUSS CALC'S FOR COINCIDING INFORMATION
(R7)	PRE-FAB TRUSSES @ 24" O.C. - SEE TRUSS CALC'S FOR COINCIDING INFORMATION
(R8)	PRE-FAB TRUSSES @ 24" O.C. - SEE TRUSS CALC'S FOR COINCIDING INFORMATION
(R9)	PRE-FAB TRUSSES @ 24" O.C. - SEE TRUSS CALC'S FOR COINCIDING INFORMATION
(R10)	PRE-FAB TRUSSES @ 24" O.C. - SEE TRUSS CALC'S FOR COINCIDING INFORMATION

ATTIC VENTILATION CALCULATIONS

ROOF SQUARE FOOTAGE	REQUIRED VENT SQ. FOOTAGE	ACTUAL VENT SQ. FOOTAGE
1847	12.3	12.77
1 - 8" TRI VENT.		3.0
14 - 0'HAGIN VENTS		6.86
35 FT. RIDGE VENT @ OPT. 3 CAR GARAGE		2.91
		TOTAL = 12.77 SF.

REPUBLIC HOMES, L.L.C.
 The Tektone Company
 Architectural Drafting Services
 8221 E. Corabell Cir., Mesa, AZ 85208
 PH. (602) 357-1858 FAX (602) 357-1859H. (480) 775-7273 FAX (480) 775-7270

ROOF FRAMING PLAN
 SHEET CONTENT:

PROJECT NO.: RH99-0504
 DRAWN BY: DENNIS HERZOG
 DATE: 9-10-99
 REVISIONS:

Rev.	DATE:
1	
2	
3	
4	

PLAN 1252
A-3