

PHOENIX OFFICE:
1920 North 17th Street, Suite 210
Phoenix, Arizona 85024
(623) 869-0601 Telephone
(623) 869-0603 Facsimile

CORPORATE OFFICE:
555 Anton Boulevard, Suite 250
Costa Mesa, California 92626
(714) 513-1500 Telephone
(714) 513-1555 Facsimile

E-Mail: webmail@borm.com
www.borm.com

© COPYRIGHT 2001, BORM ASSOCIATES, INC.
ALL RIGHTS RESERVED

NOTICE:
THESE DRAWINGS AND SPECIFICATIONS AND THE IDEAS, DESIGNS, AND ARRANGEMENTS REPRESENTED THEREBY ARE AND SHALL REMAIN THE PROPERTY OF BORM ASSOCIATES, INC. AND NO PART THEREOF SHALL BE COPIED, DISCLOSED TO OTHERS, OR USED IN CONNECTION WITH ANY OTHER WORK OR PROJECT OTHER THAN THE SPECIFIC PROJECT FOR WHICH THEY HAVE BEEN PREPARED AND DEVELOPED WITHOUT THE WRITTEN CONSENT OF BORM ASSOCIATES, INC. WRITTEN PERMISSIONS ON THESE DRAWINGS SHALL HAVE PRECEDENCE OVER SCALED DIMENSIONS. CONTRACTORS SHALL VERIFY, AND BE RESPONSIBLE FOR ALL DIMENSIONS AND CONDITIONS ON THE JOB. THIS OFFICE MUST BE NOTIFIED OF VARIATIONS FROM THE DIMENSIONS AND CONDITIONS SHOWN BY THESE DRAWINGS.

REFER TO 8N SHEETS FOR ALL NOTES AND SPECIFICATIONS

PROJECT:
Broadway at San Marcos

OWNER/DEVELOPER:
Liberty Homes

ARCHITECT/DRAWN BY:
MDW Designs

SHEET:
AZ-NV

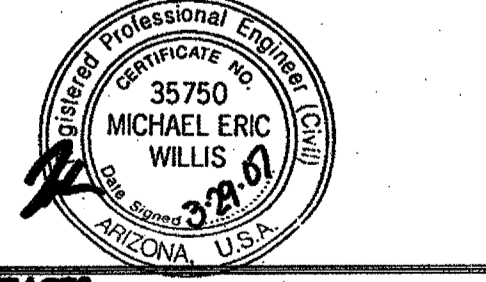
STRUCTURAL 2X ROOF TRUSS DETAILS (1 thru 30)

REFERENCE DATE: 03-28-01
ISSUED FOR:

CLIENT DELIVERY: 03-29-01



ENGINEER OF RECORD:

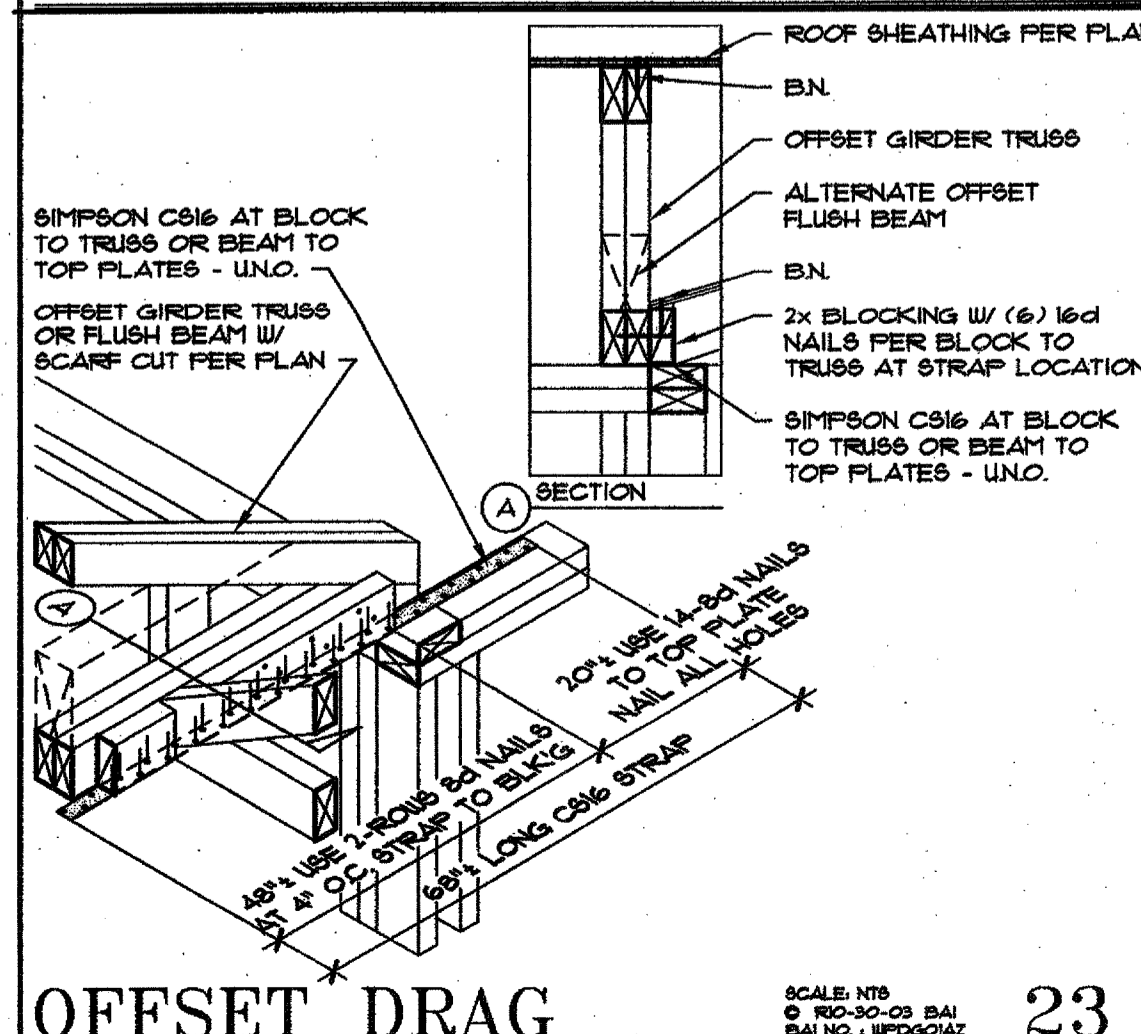
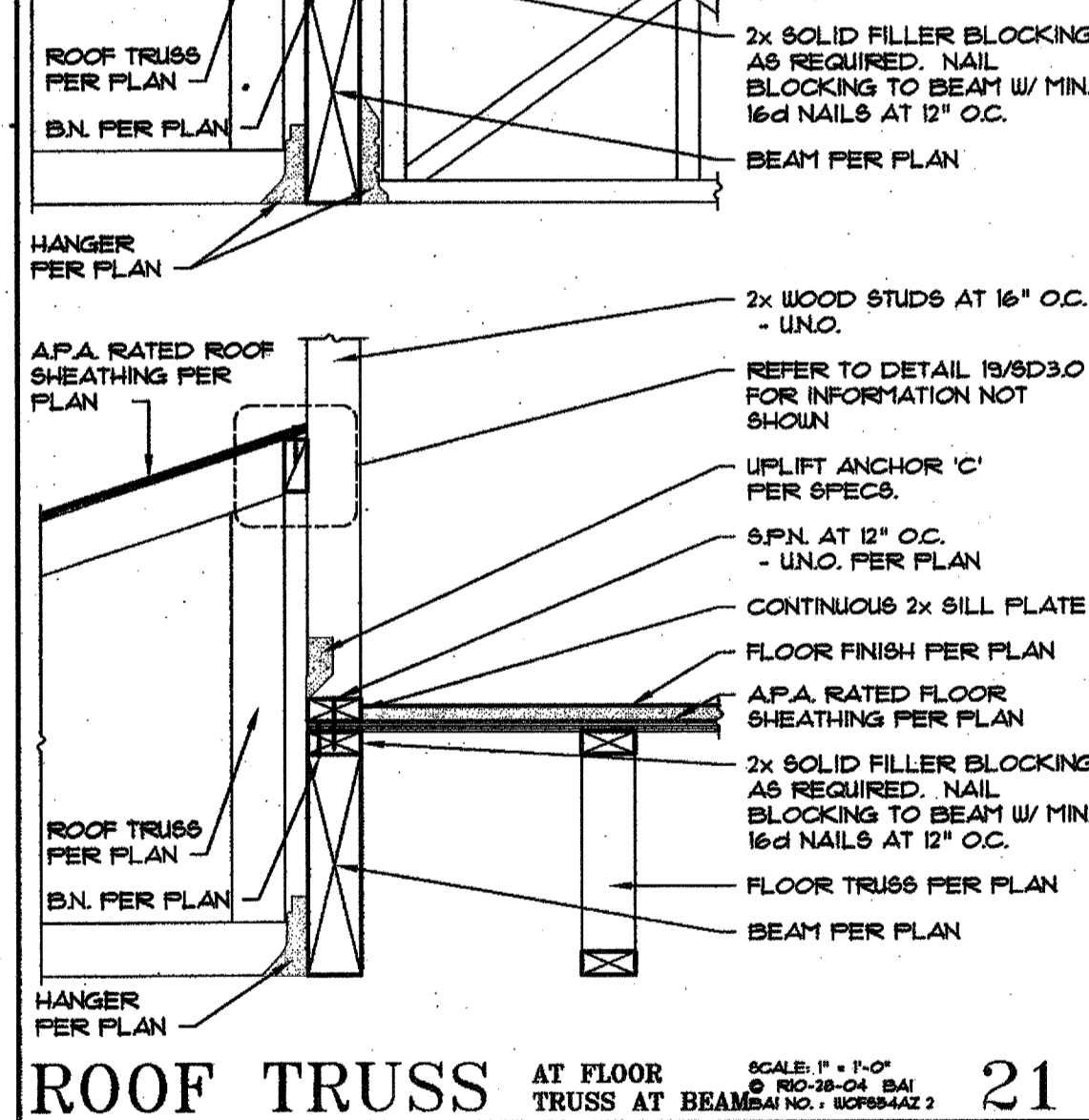
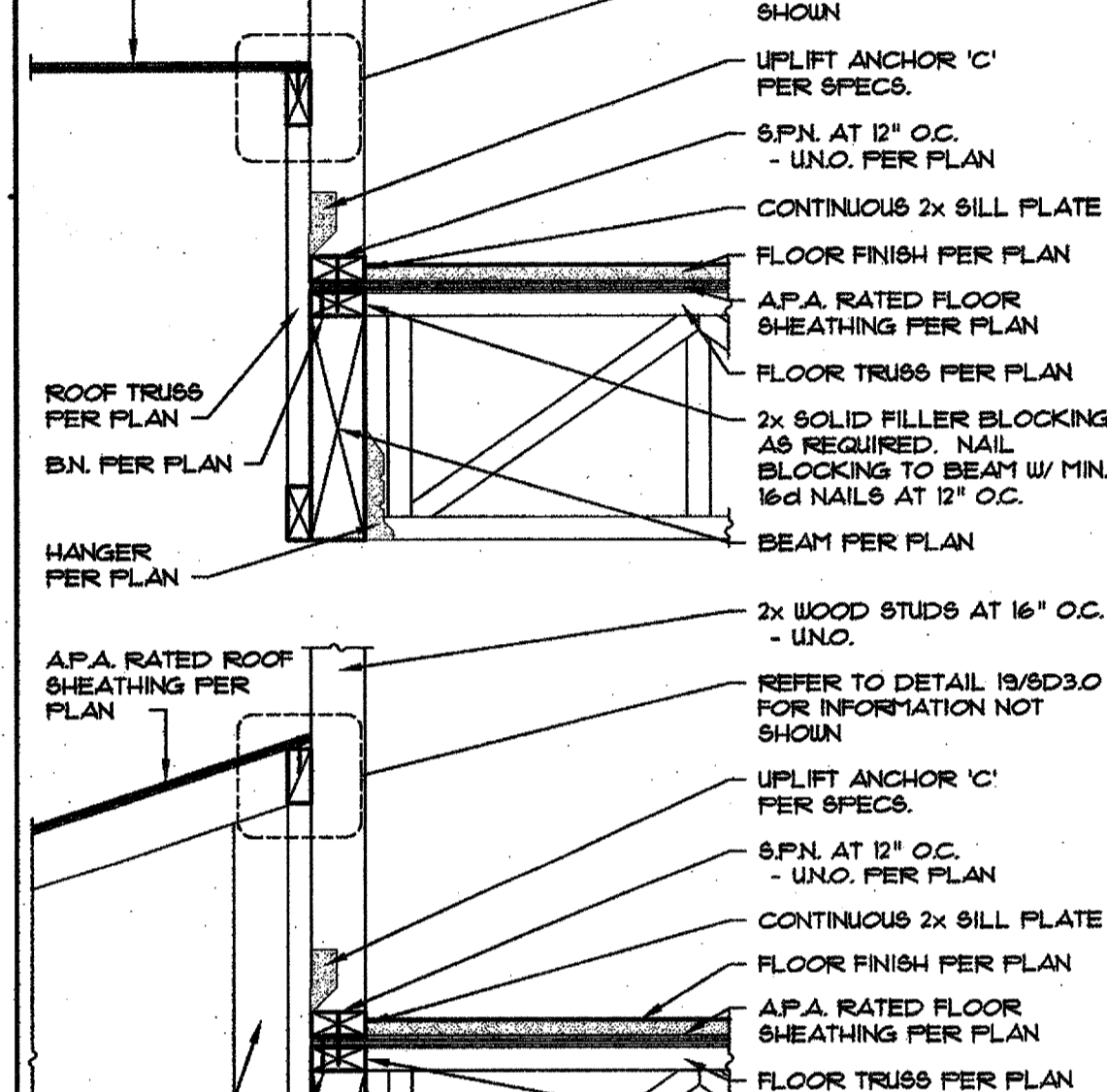
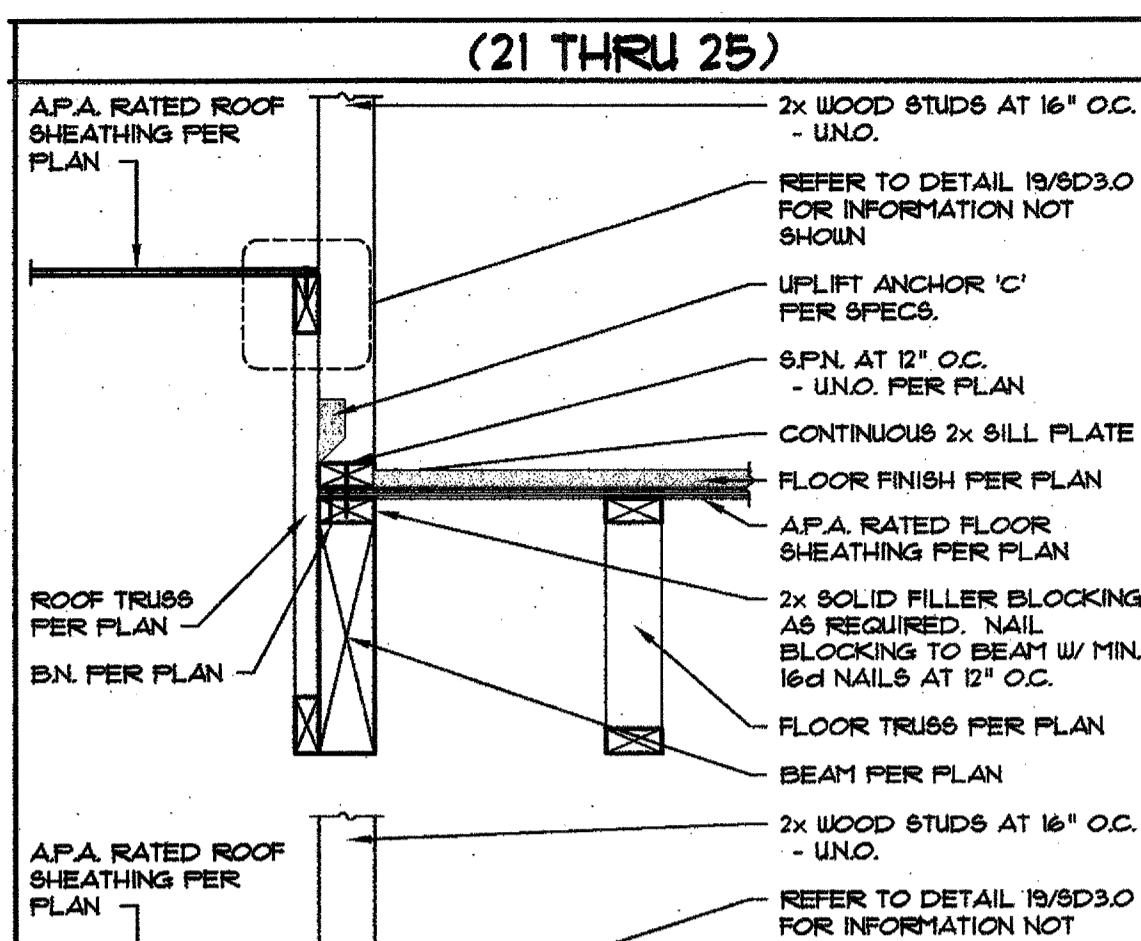
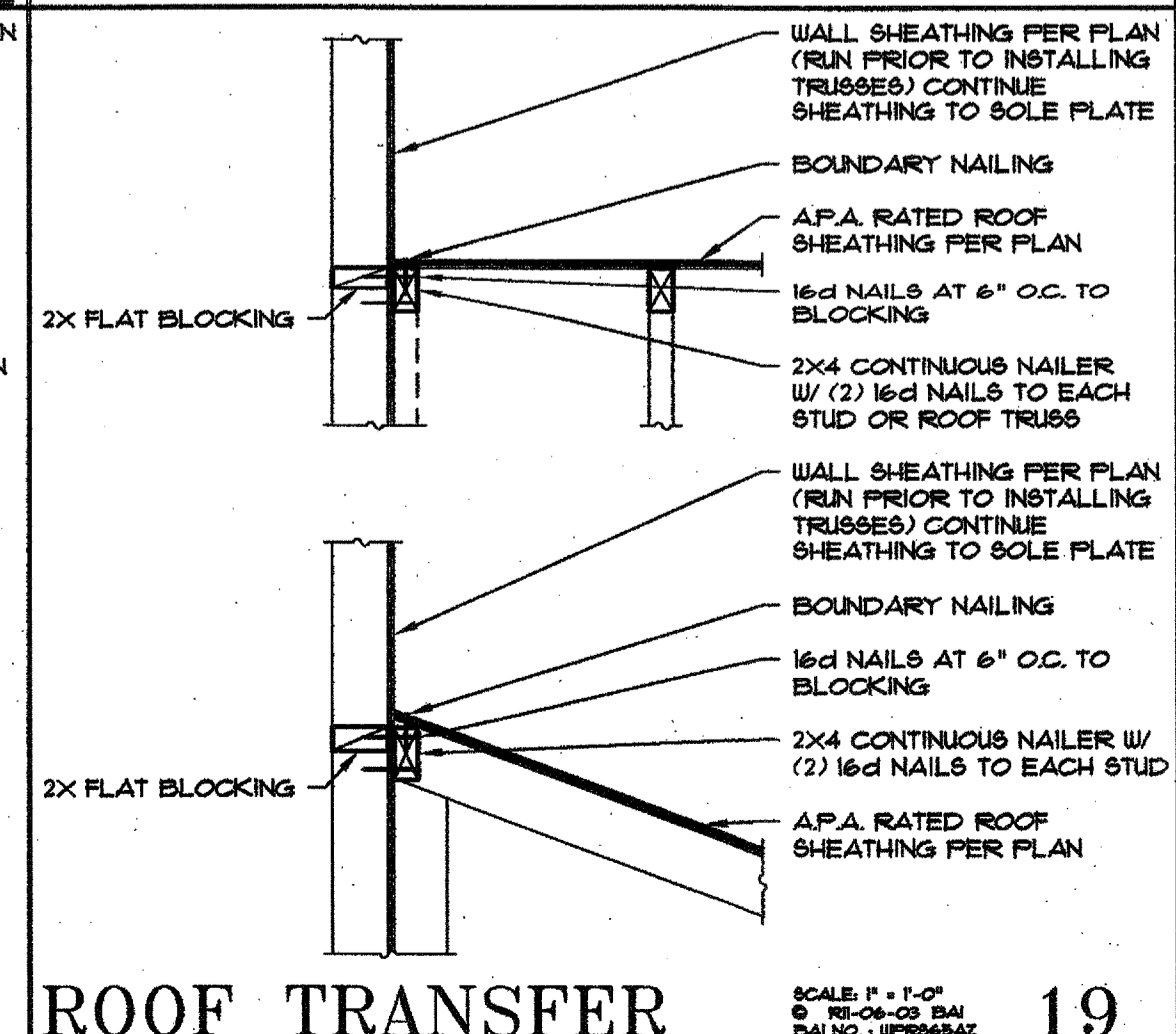
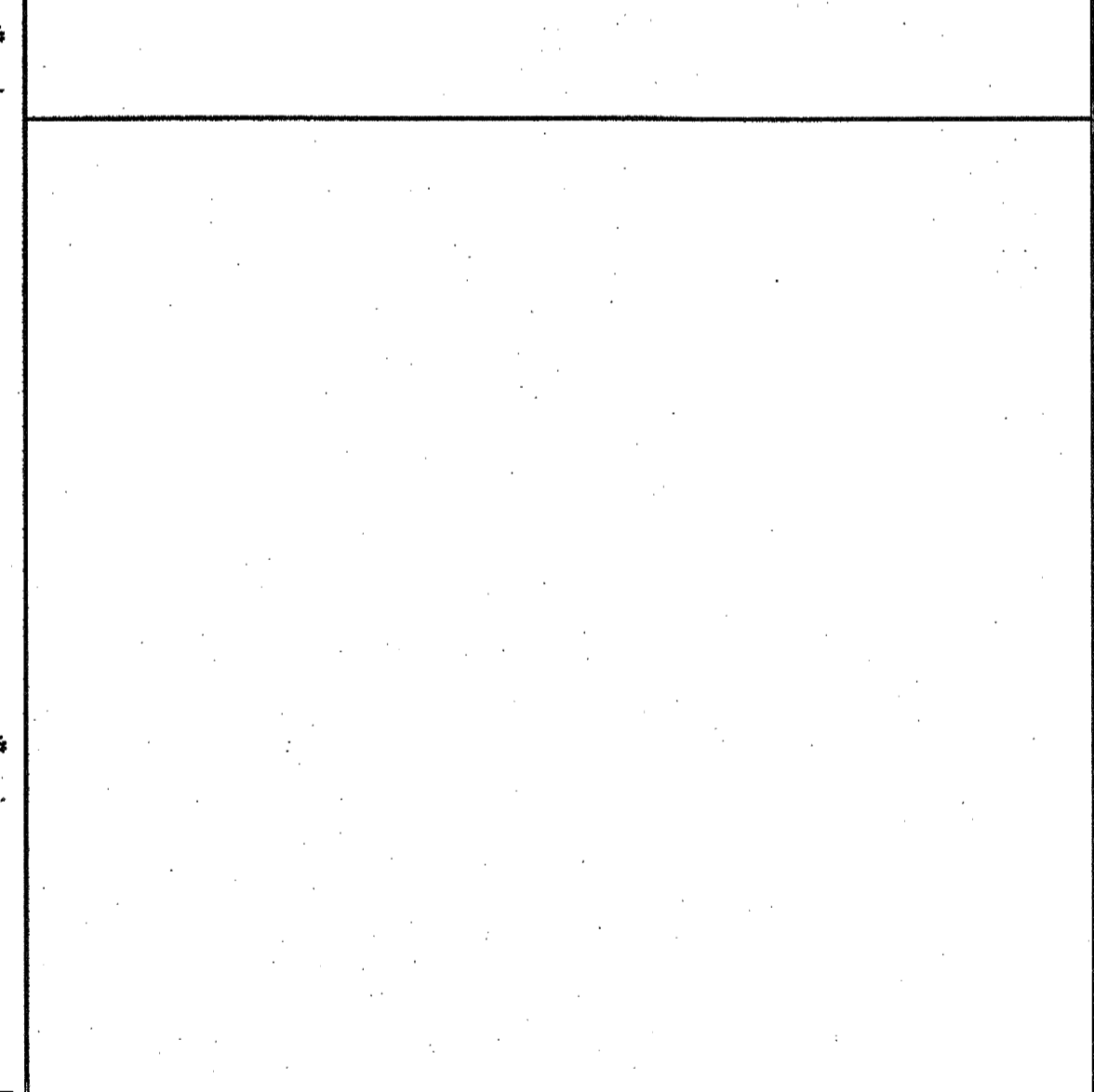
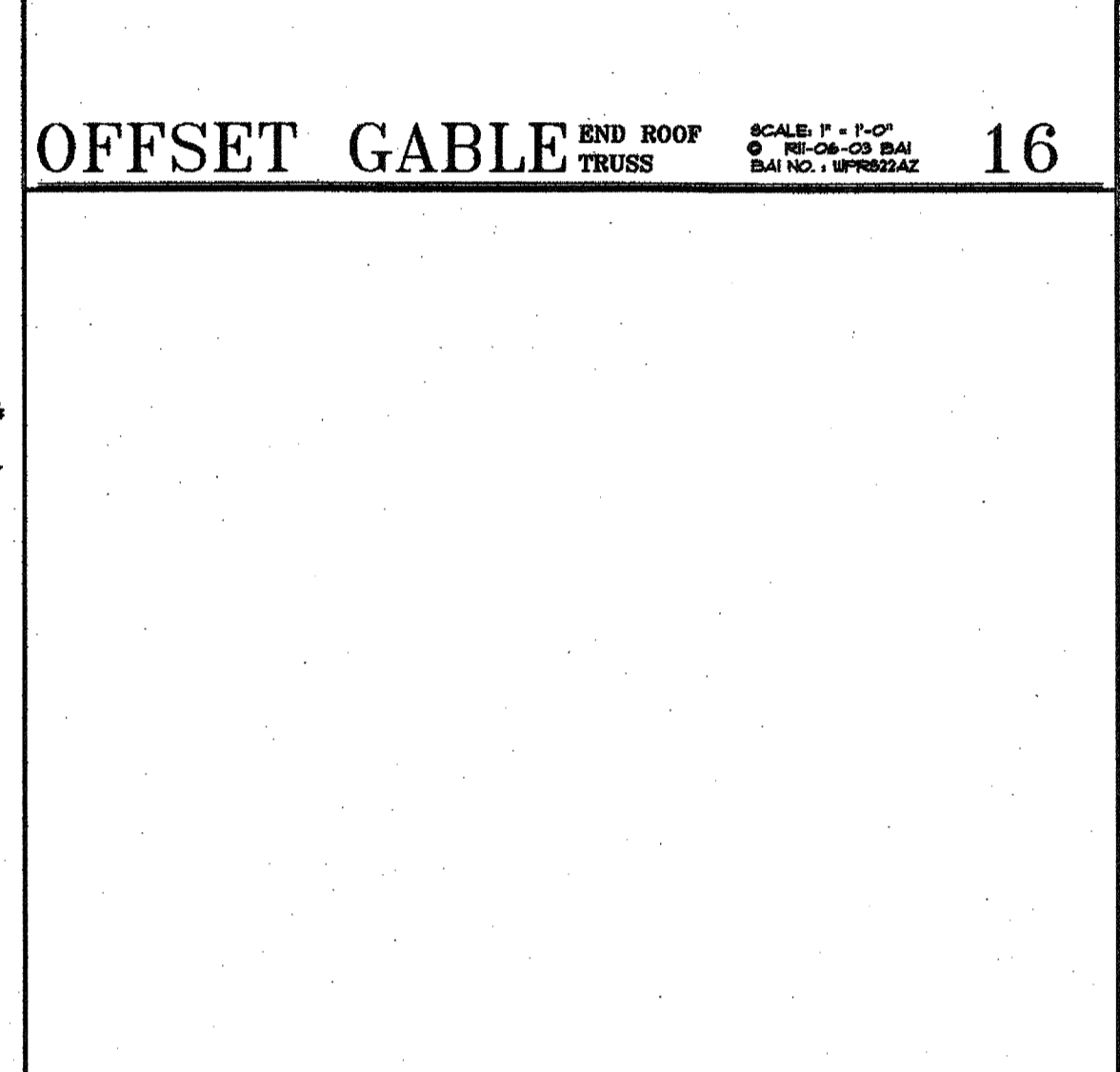
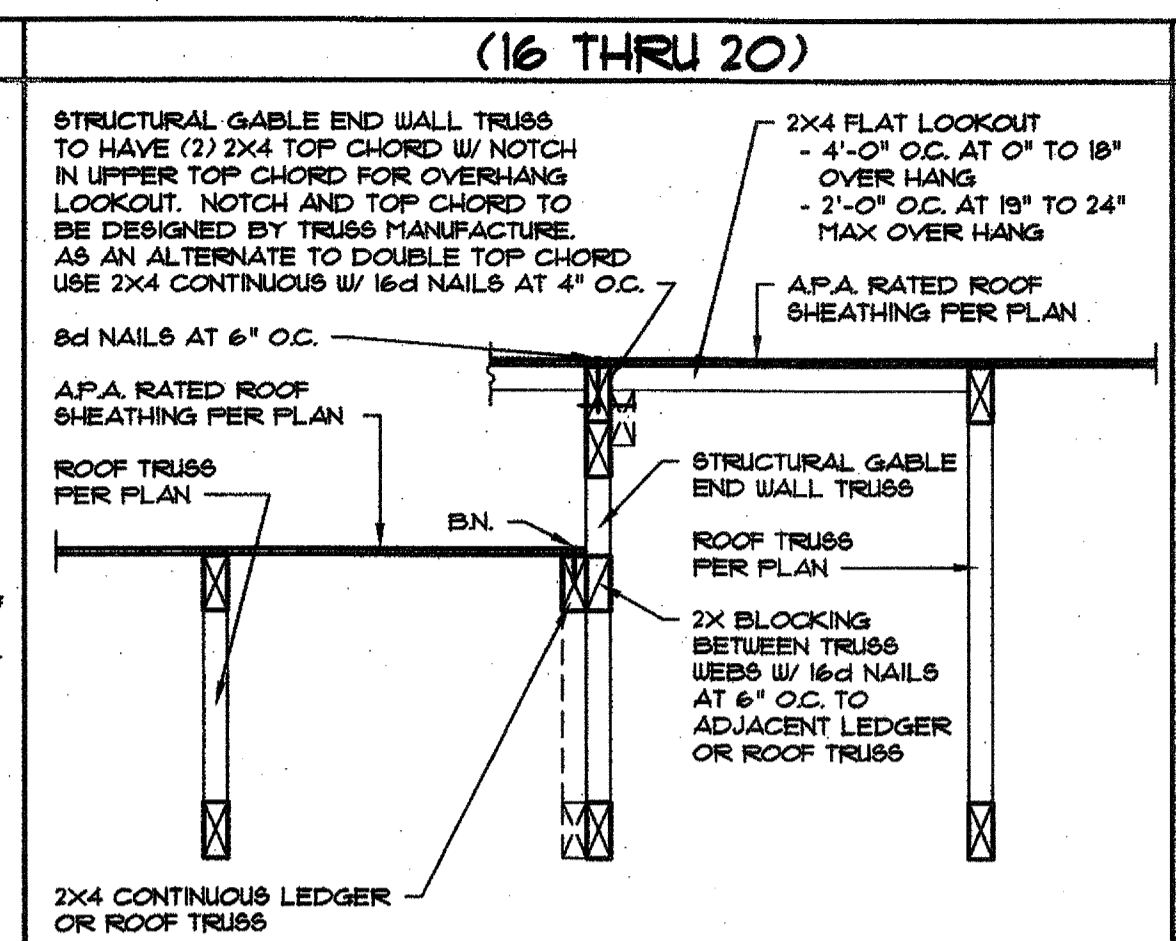
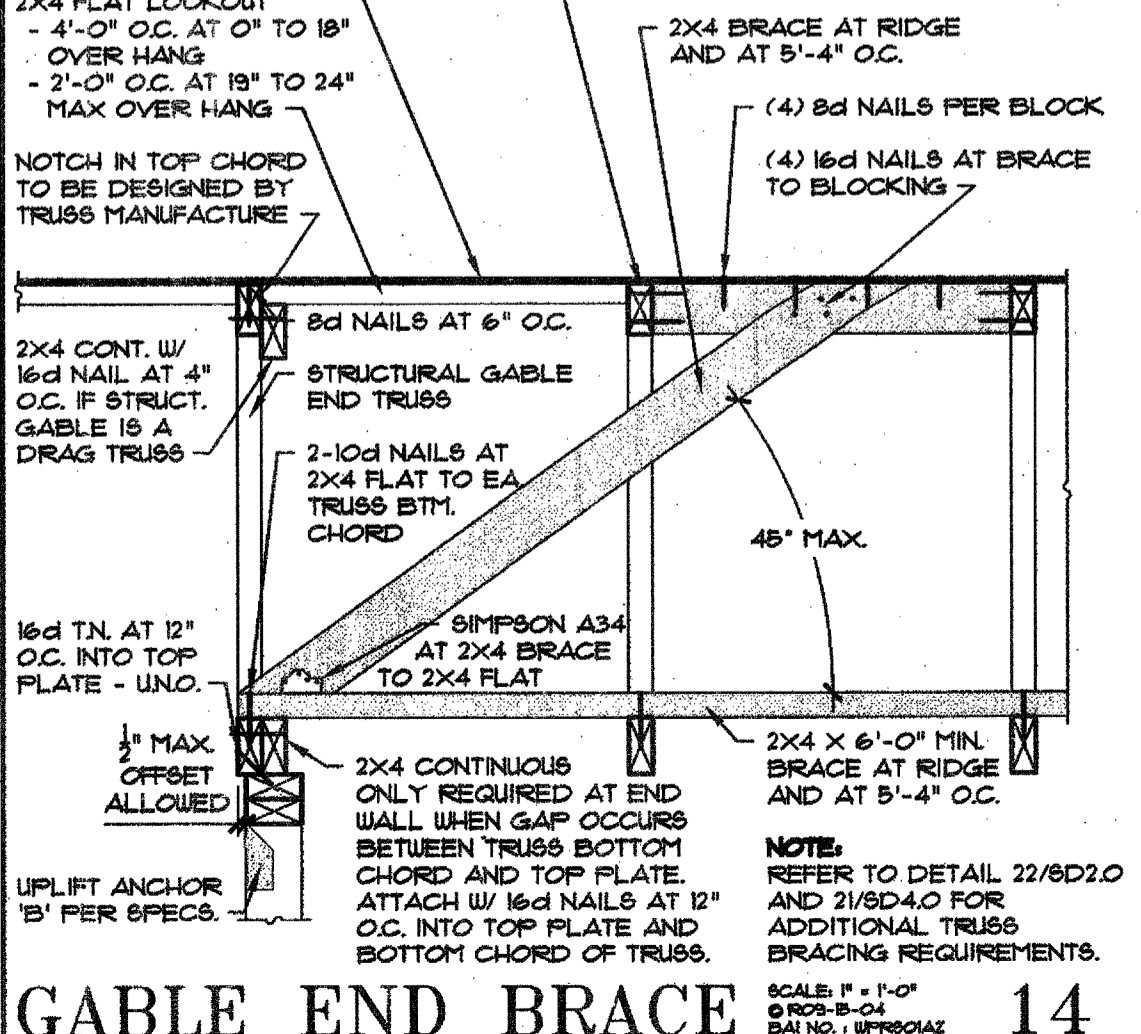
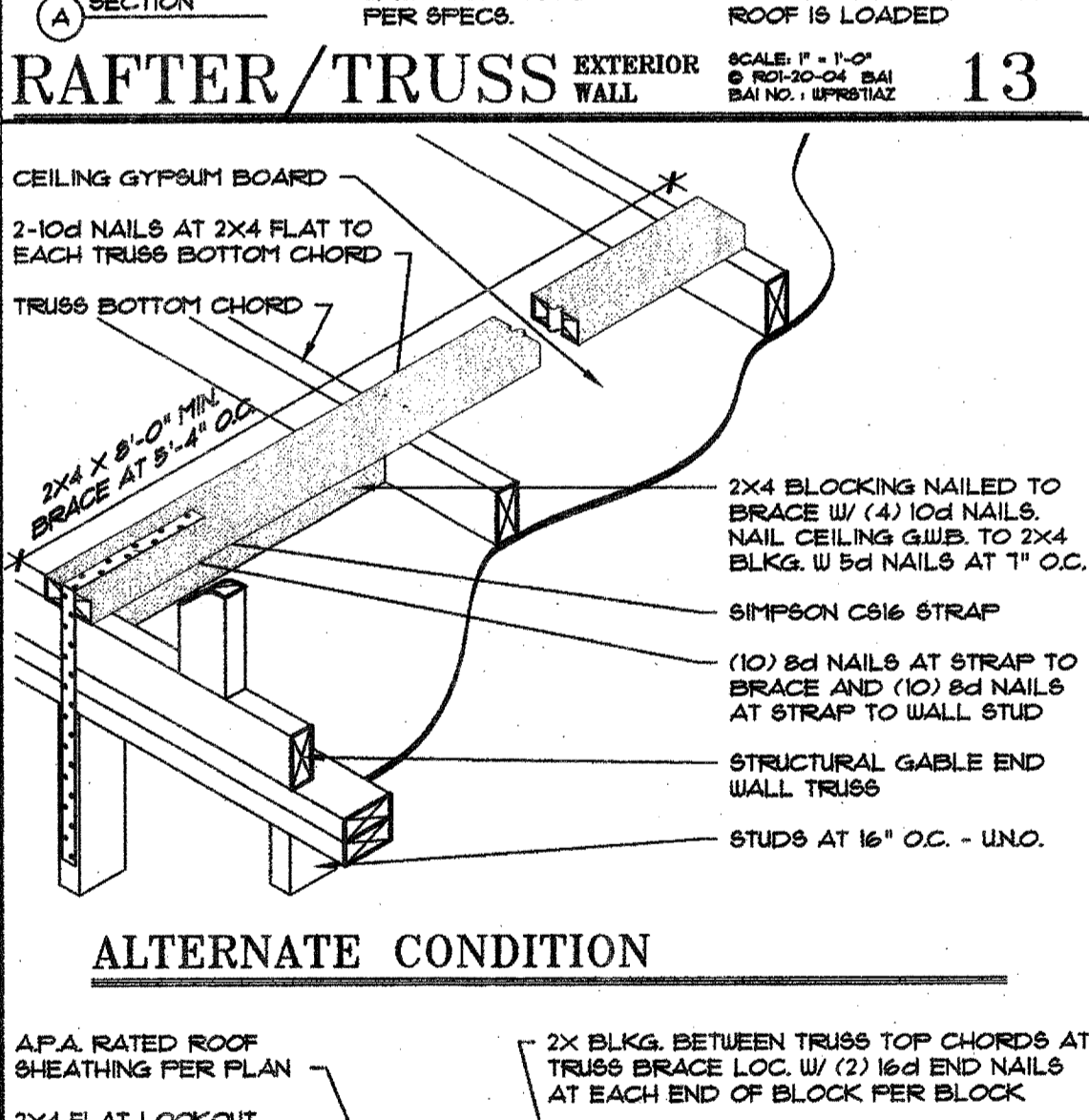
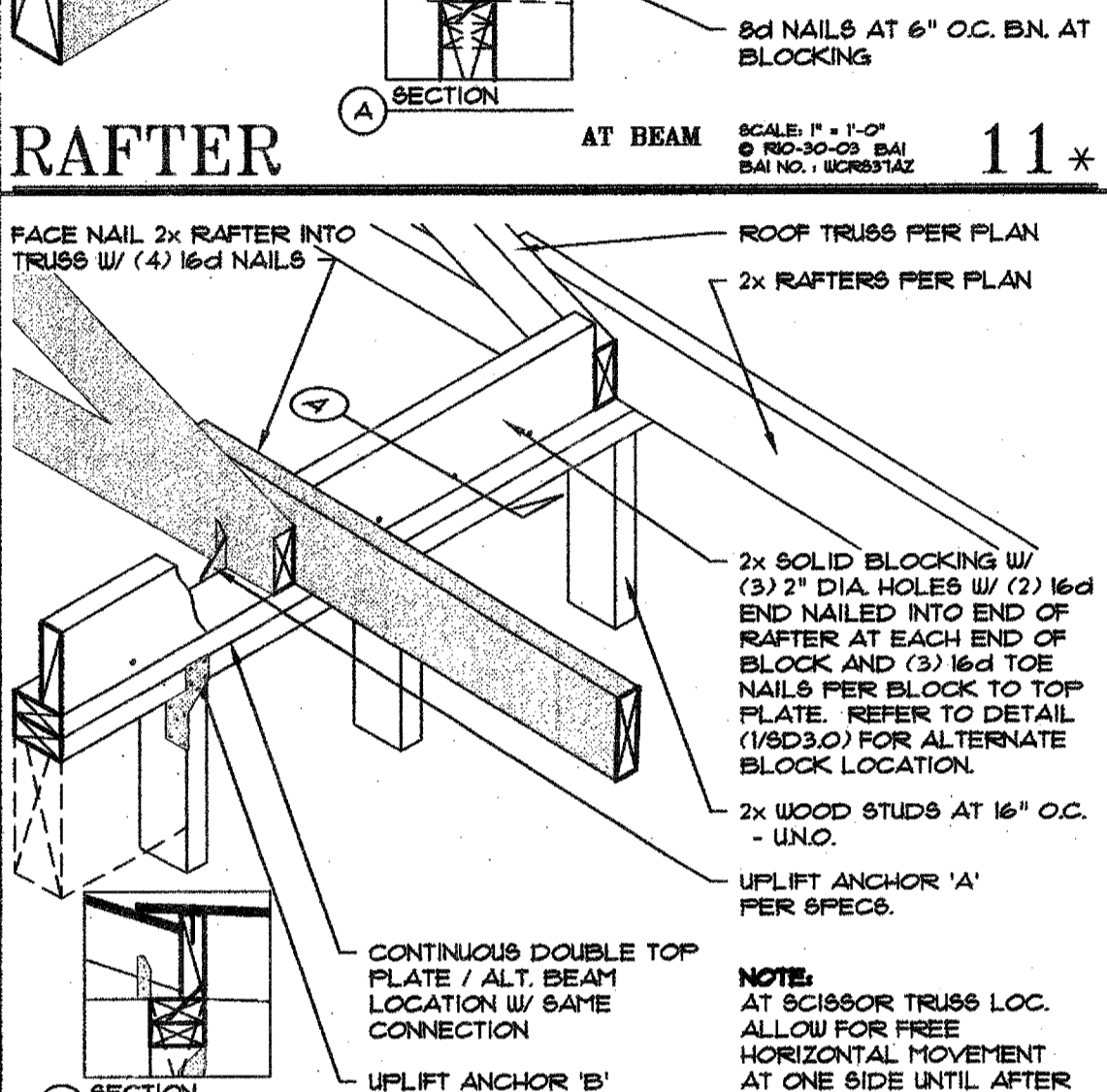
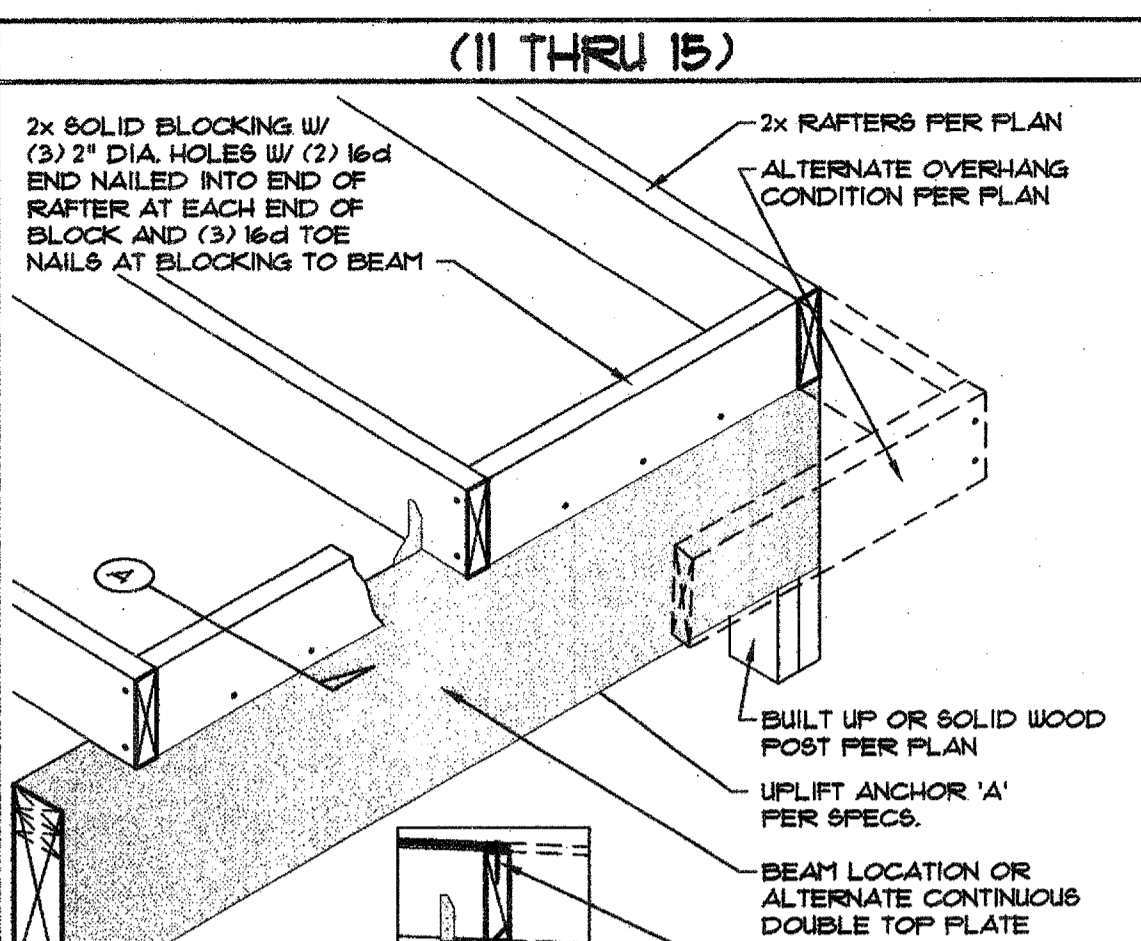
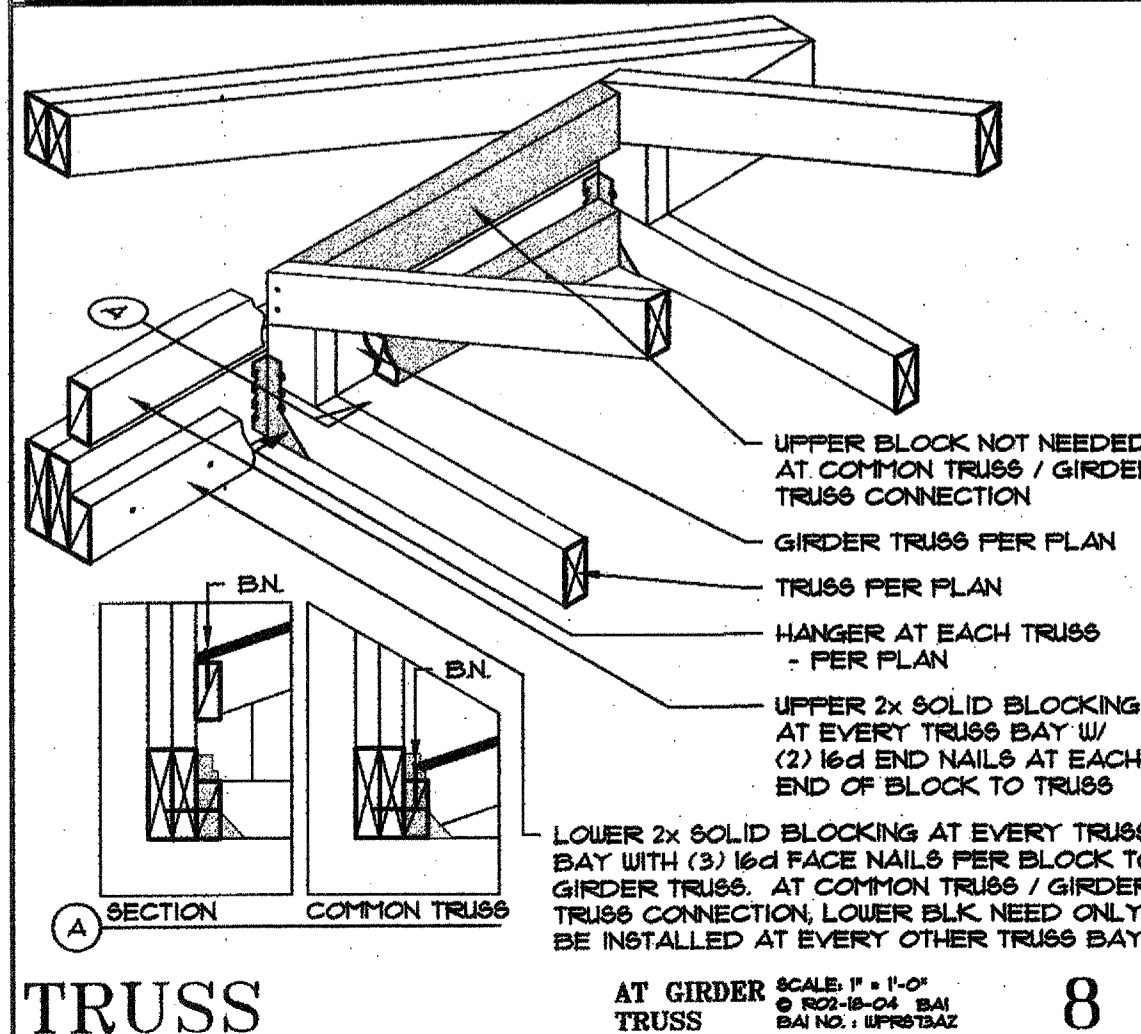
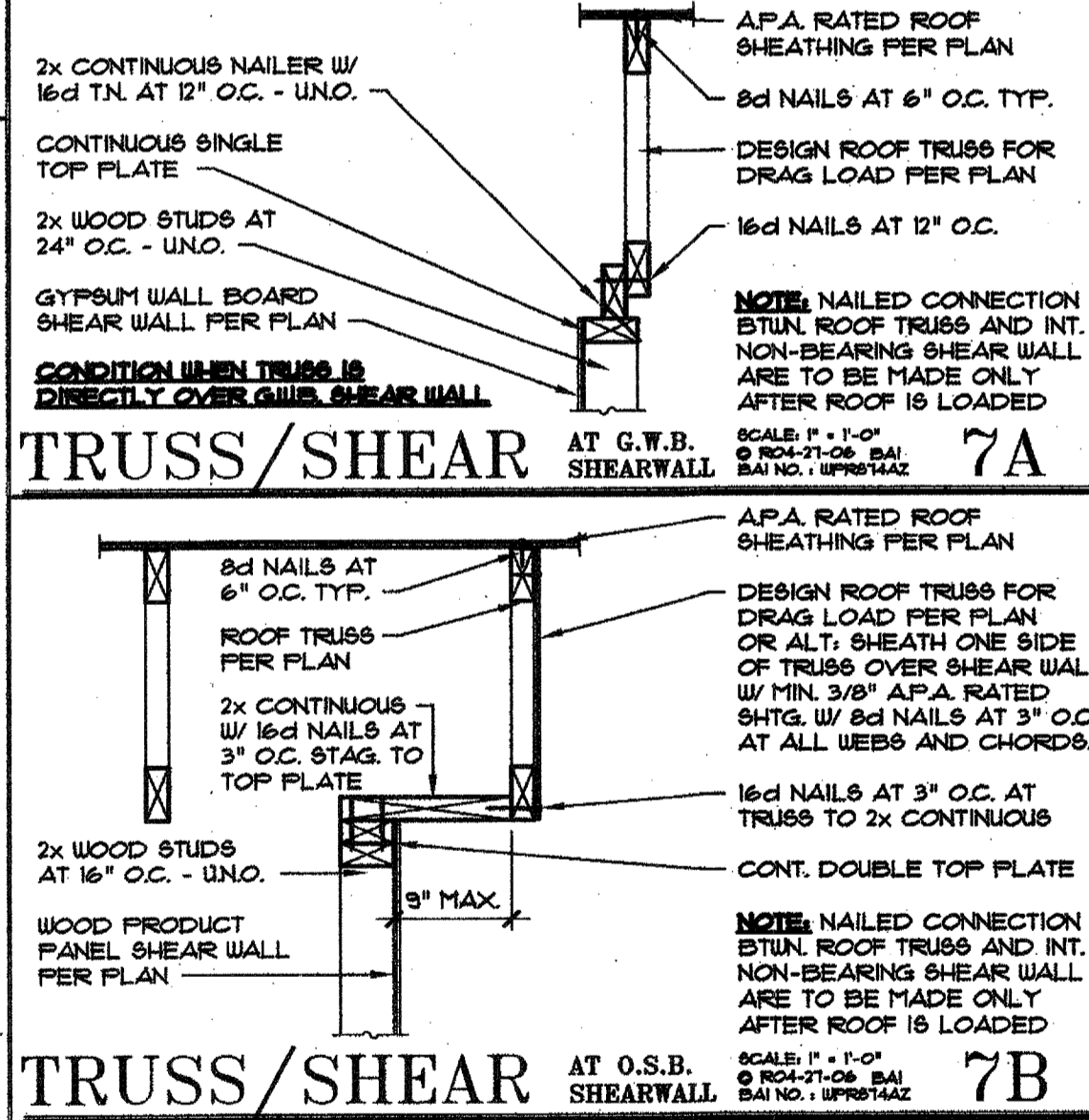
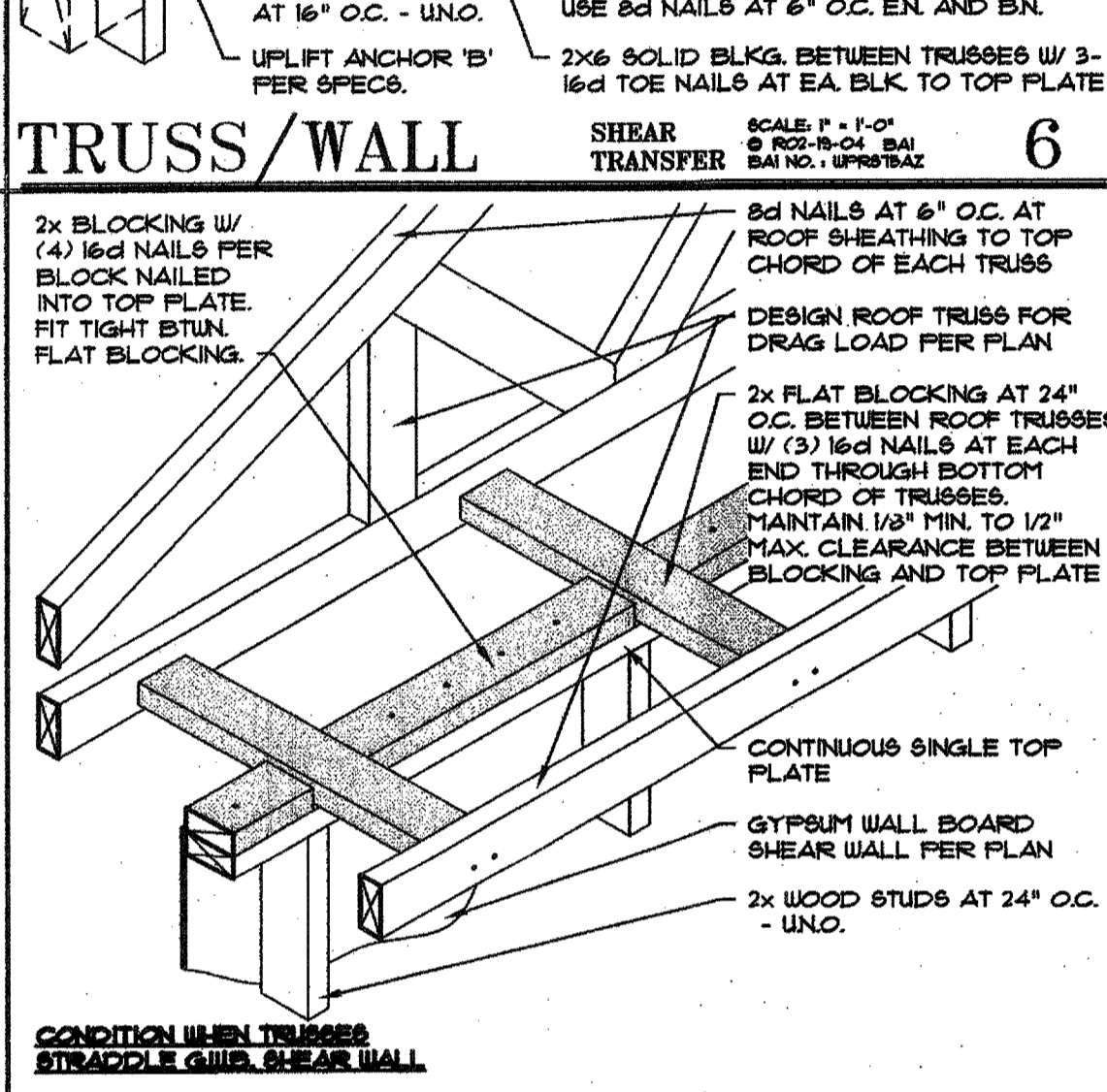
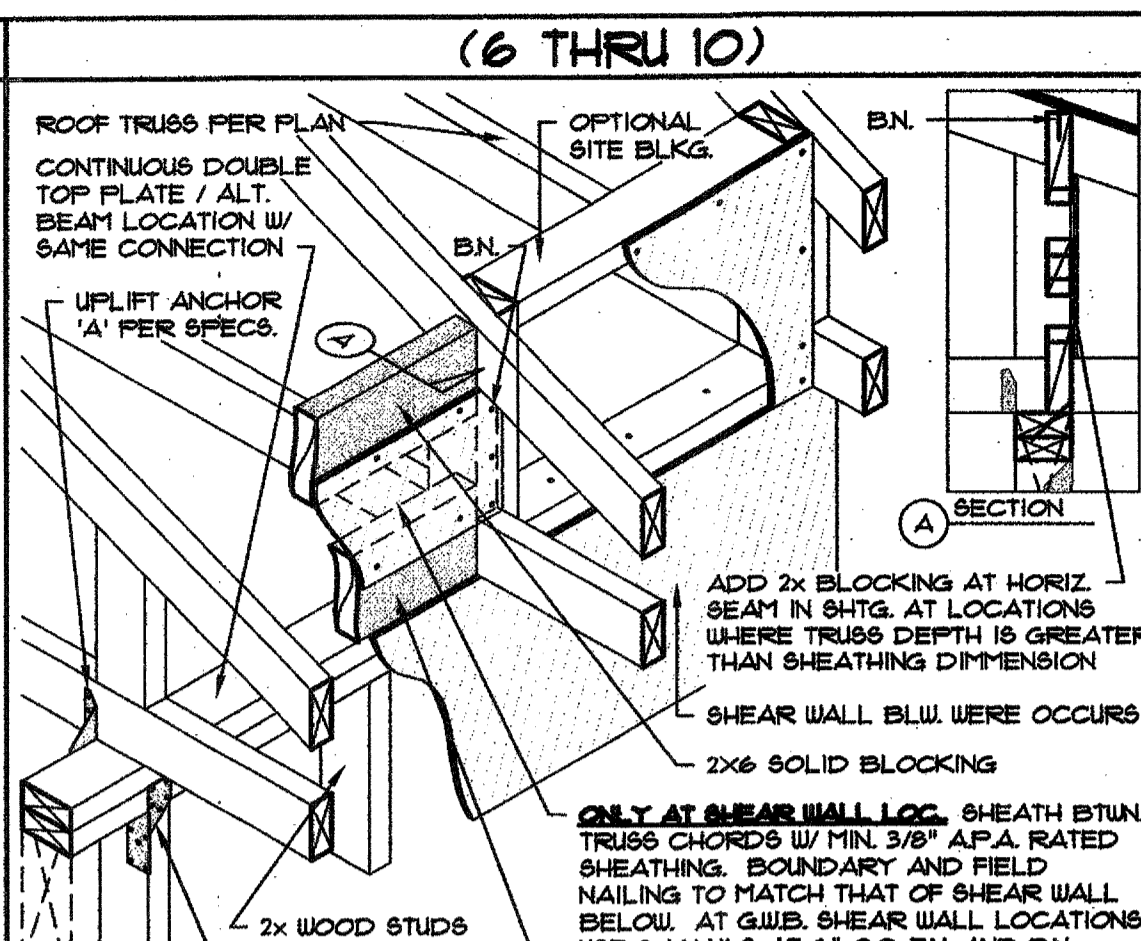
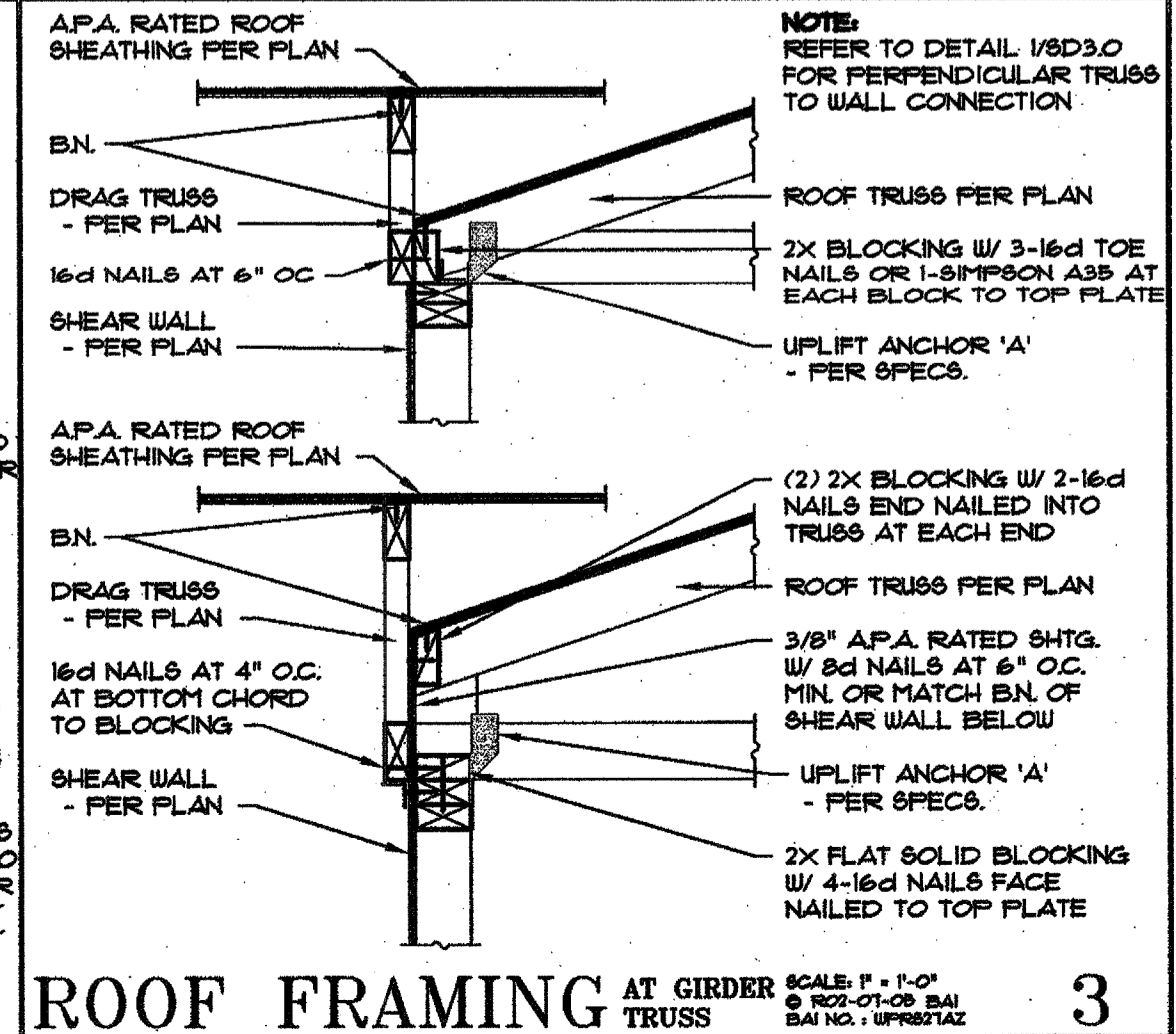
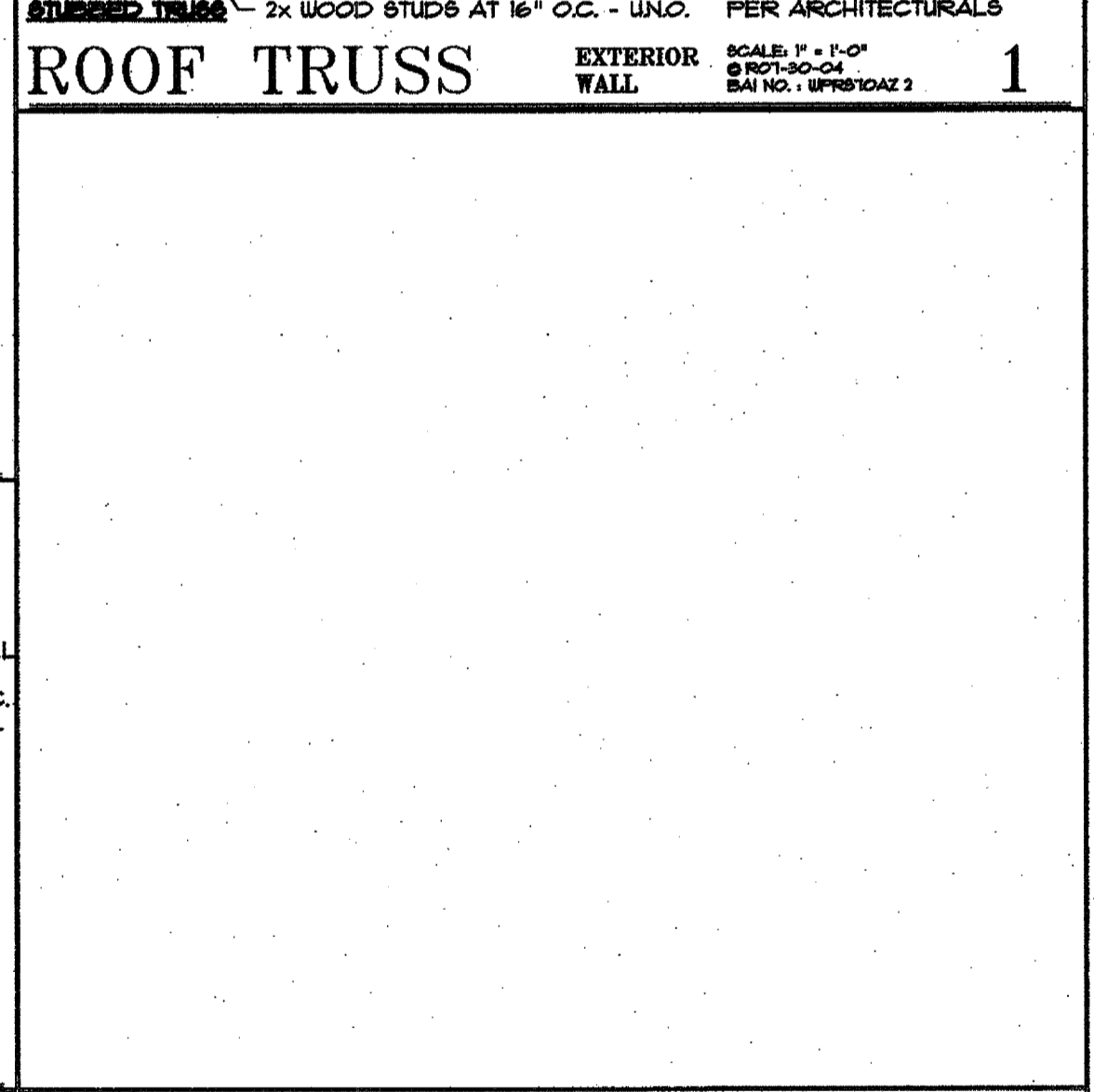
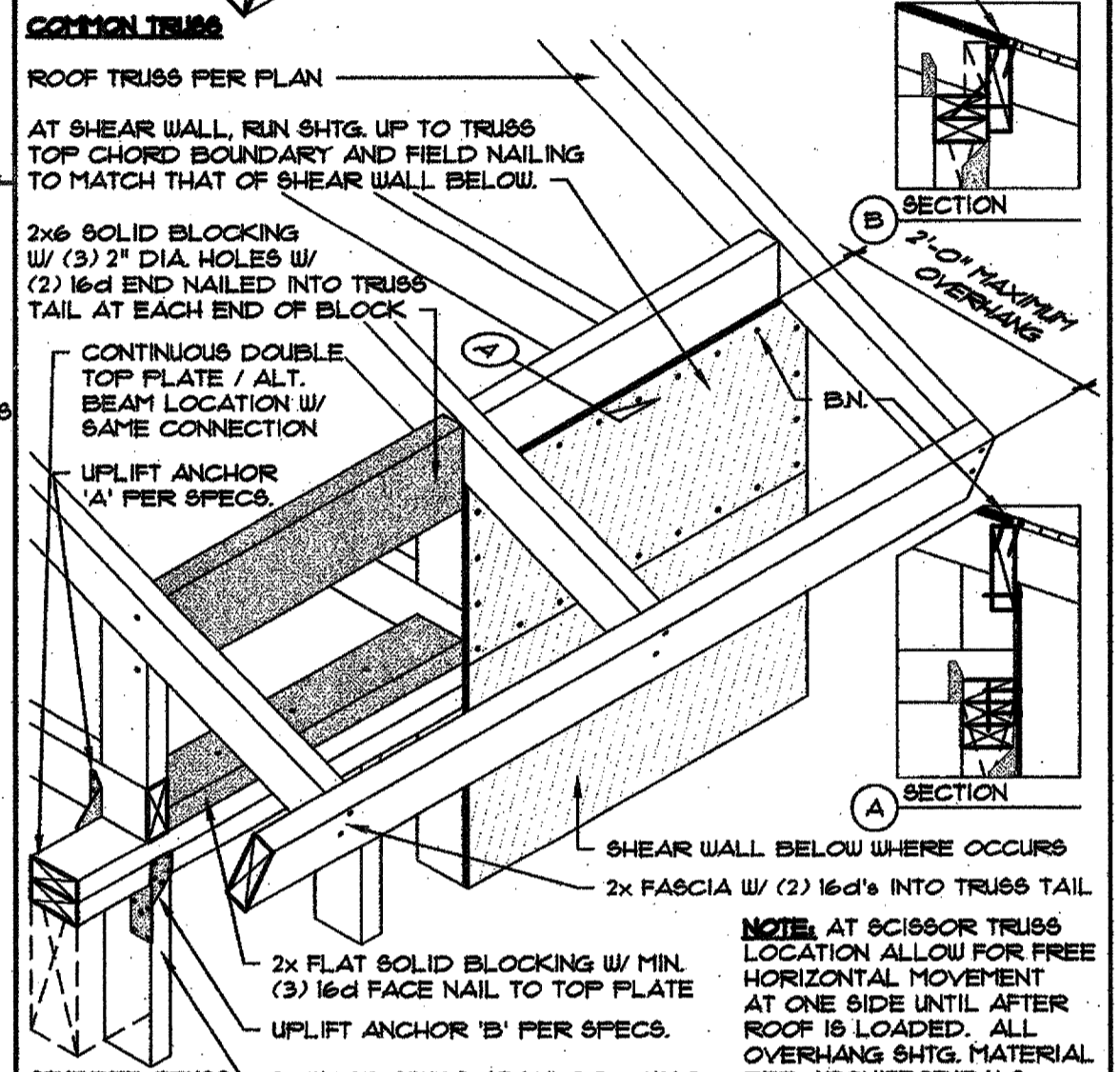
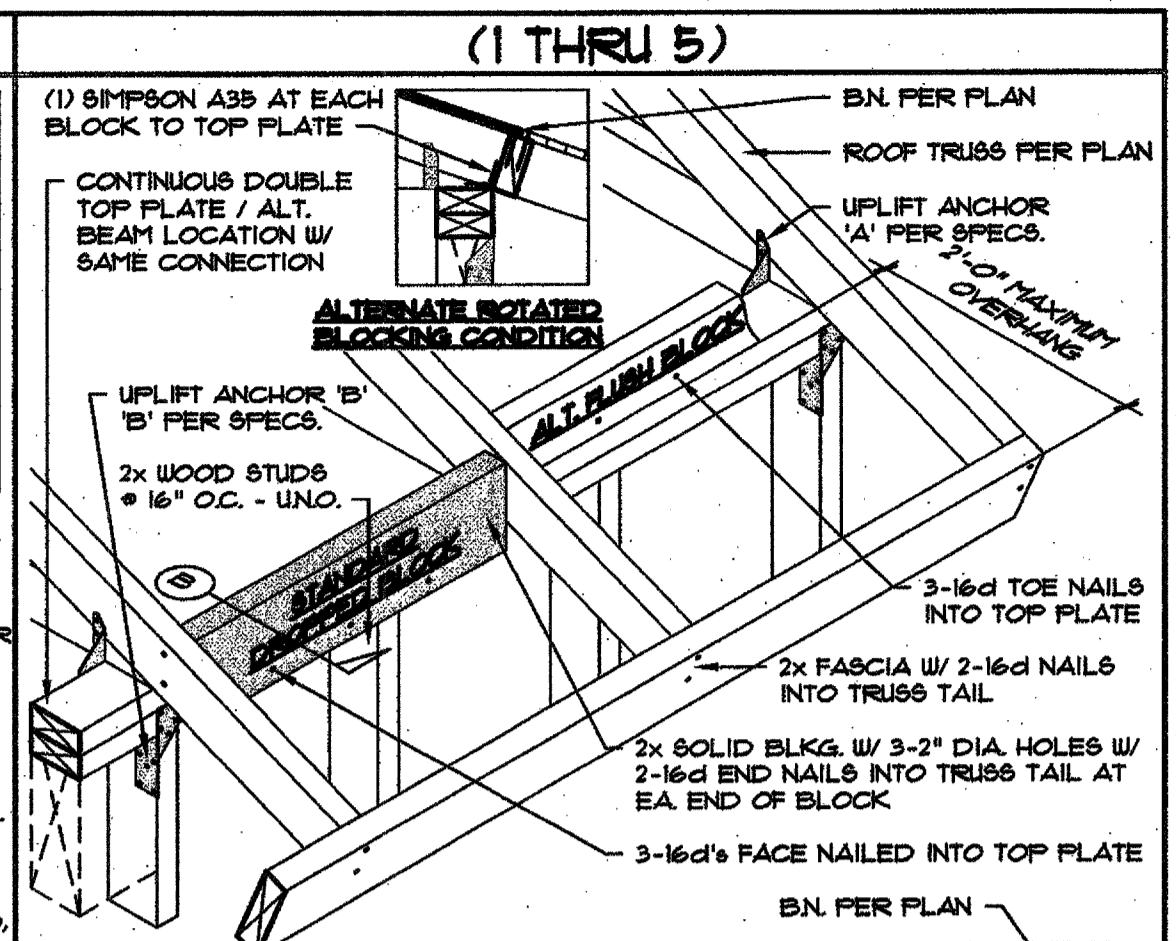


CONTACTS:
For design questions regarding these plans and specifications contact the Project Manager:
Steve Demer
Telephone: (623) 869-0601 ext. 233
Facsimile: steved@borm.com
Email: steved@borm.com

For scheduling site observation and for field changes contact the Construction Administrator:
Allison Engler
Telephone: (623) 869-0601 ext. 232
Facsimile: (623) 869-0603
Email: allison@borm.com

FILE NO: 12564
CAD NO: 12564 8D3-0
DRAWN BY: KER
ENGINEER: HI
SCALE: 1/4" = 1'-0"

SHT NO: **8D3.0**



OFFSET DRAG SCALE: 1/4" = 1'-0" 23

ROOF TRANSFER SCALE: 1/4" = 1'-0" 19

GABLE END BRACE SCALE: 1/4" = 1'-0" 14

TRUSS SCALE: 1/4" = 1'-0" 8

ROOF FRAMING AT GIRDER TRUSS SCALE: 1/4" = 1'-0" 3

TRUSS/SHEAR SCALE: 1/4" = 1'-0" 7A

TRUSS/SHEAR SCALE: 1/4" = 1'-0" 7B

RAFTER/TRUSS EXTERIOR WALL SCALE: 1/4" = 1'-0" 13

RAFTER SCALE: 1/4" = 1'-0" 11

OFFSET GABLE END ROOF TRUSS SCALE: 1/4" = 1'-0" 16

ROOF TRUSS AT FLOOR TRUSS AT BEAM SCALE: 1/4" = 1'-0" 21