

REVISIONS:

RESIDENCE FOR
 LIBERTY HOMES
 SAN MARCOS / APACHE JUNCTION

"C" ELEVATION
 1967 MADRID

DATE: 03.06.07
 DRAWN: MDW 04.19.05
 MODIFIED:
 CHECKED:
 FILE: San Marc-1967-042005

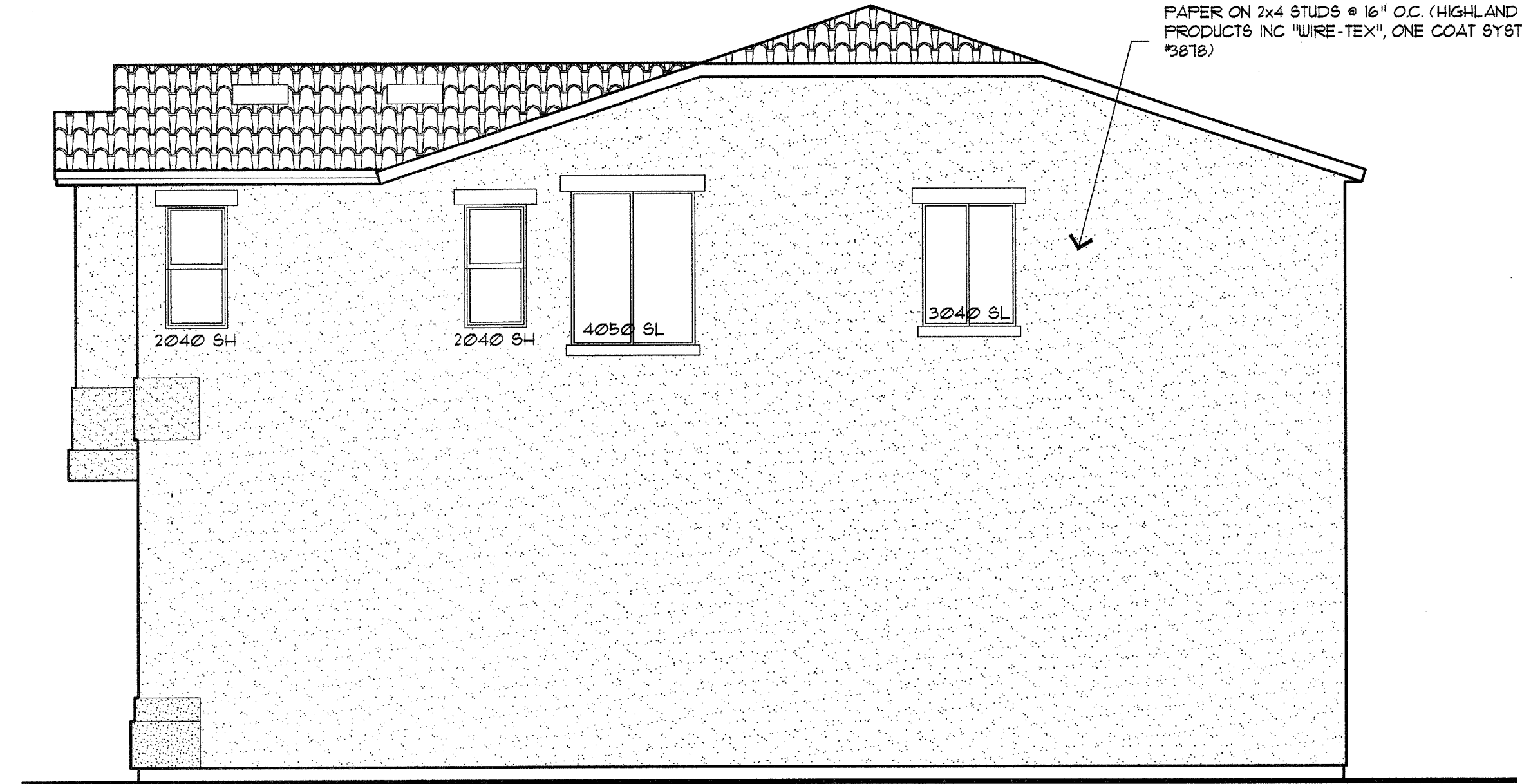
SITE NO:
 SM
 A2.5
 SHEET NO:

TYPICAL TILE ROOF ASSEMBLY:
 MEXICAN CLAY TILE (REDLAND CLAY TILE) ON 3/4"
 CAP SHEET HOT MOPPED OVER OSB PLYWOOD ON
 PRE-ENGINEERED ROOF TRUSSES @ 24" O.C.



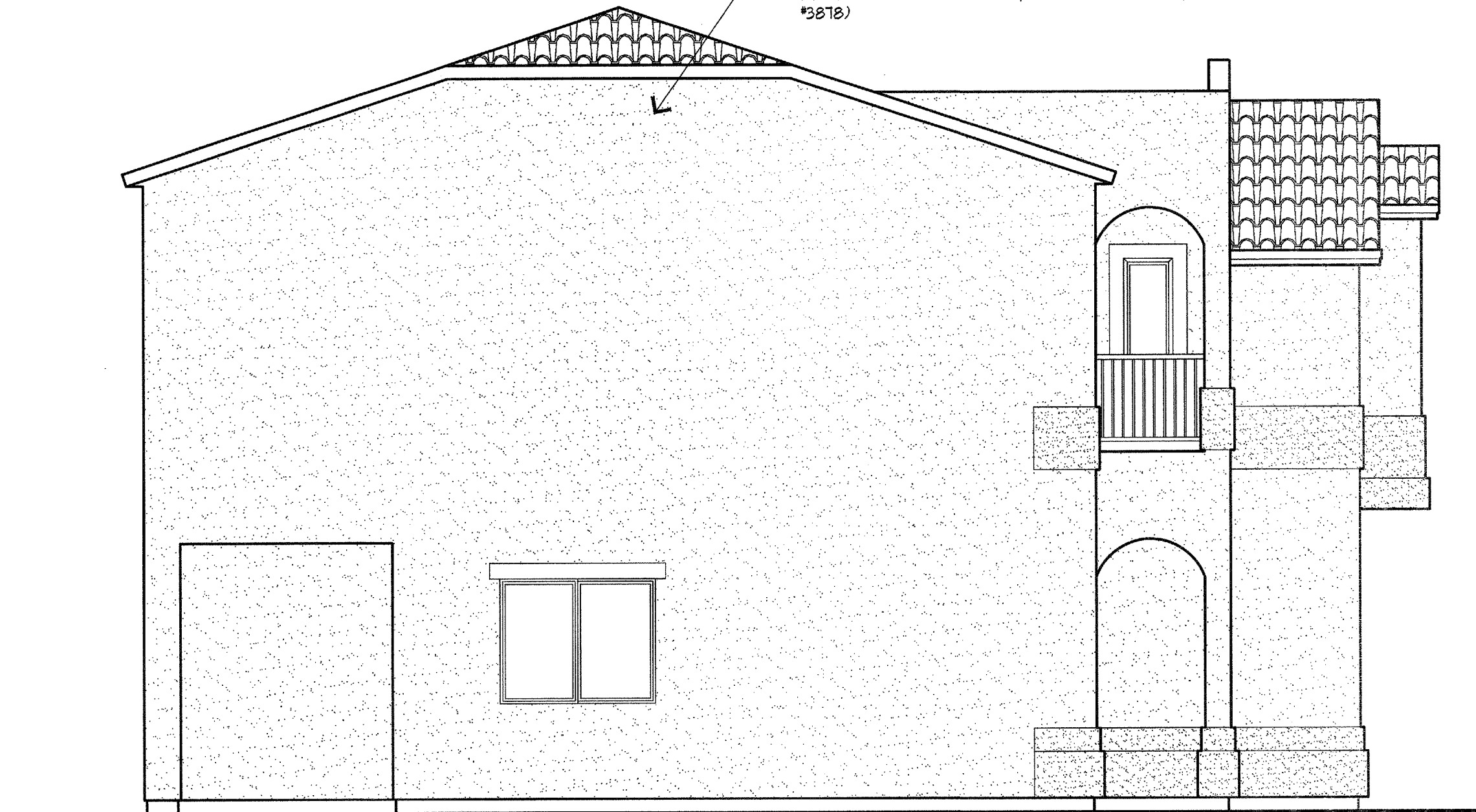
FRONT ELEVATION 'C'

TYPICAL STUCCO WALL ASSEMBLY:
 3/8" STUCCO ON MTL. LATH OVER 1" STYRO-FOAM
 TAG OVER (2) LAYERS OF GRADE 'D' KRAFT
 PAPER ON 2x4 STUDS @ 16" O.C. (HIGHLAND
 PRODUCTS INC 'WIRE-TEX', ONE COAT SYSTEM, E.R.
 #3818)



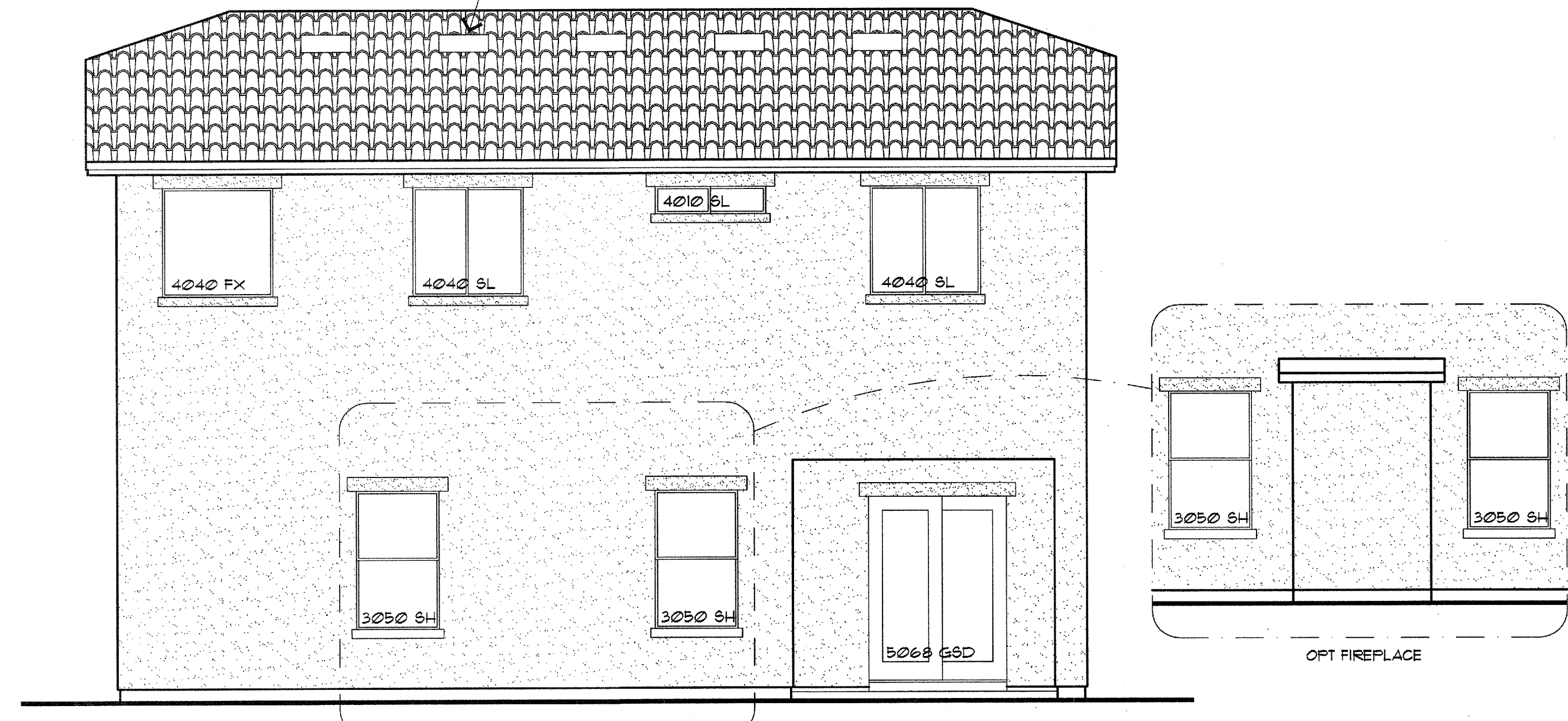
RIGHT ELEVATION

TYP STUCCO GABLE END ASSEMBLY:
 3/8" STUCCO ON MTL. LATH OVER 1" BLACK
 FIBER-BOARD OVER (2) LAYERS OF GRADE 'D'
 KRAFT PAPER ON 2x4 STUDS @ 16" O.C. (HIGHLAND
 PRODUCTS INC 'WIRE-TEX', ONE COAT SYSTEM, E.R.
 #3818)



LEFT ELEVATION

DORMER VENTS, (1) REQ'D
 FOR DETAILS, REFER TO SHEET A41



REAR ELEVATION