

REVISIONS:

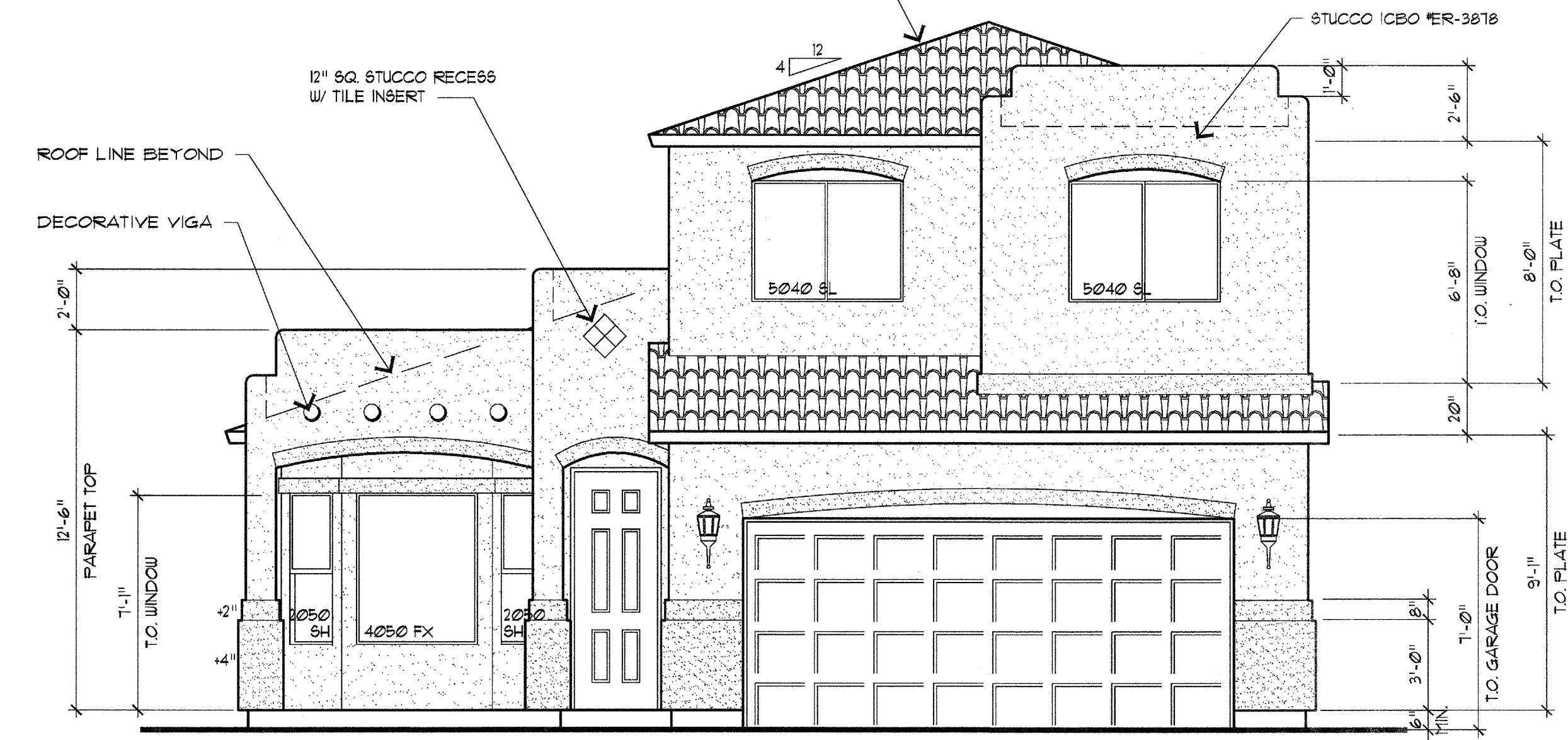
RESIDENCE FOR
 LIBERTY HOMES
 SAN MARCOS / APACHE JUNCTION

"C" ELEVATION
 1786 BARCELONA

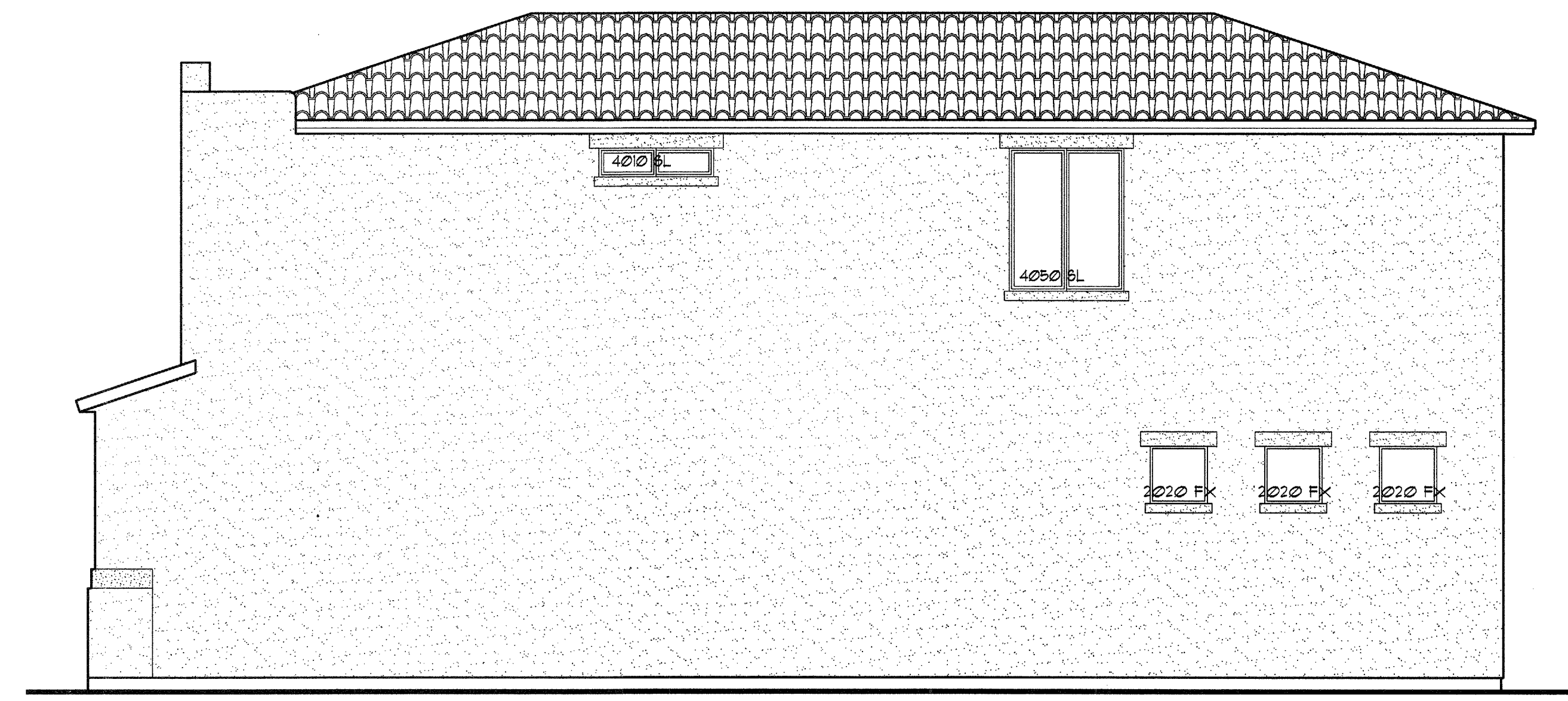
DATE: 03.06.2007
 DRAWN: MDW 04.19.05
 MODIFIED:
 CHECKED:
 FILE: San Marc-1897-042005

SITE NO:
 SM
 A2.5
 SHEET NO:

TYPICAL TILE ROOF ASSEMBLY:
 MEXICAN CLAY TILE (RED/LAND CLAY TILE) ON 3/8"
 CAP SHEET HOT MOPPED OVER OSB PLYWOOD ON
 PRE-ENGINEERED ROOF TRUSSES @ 24" O.C.

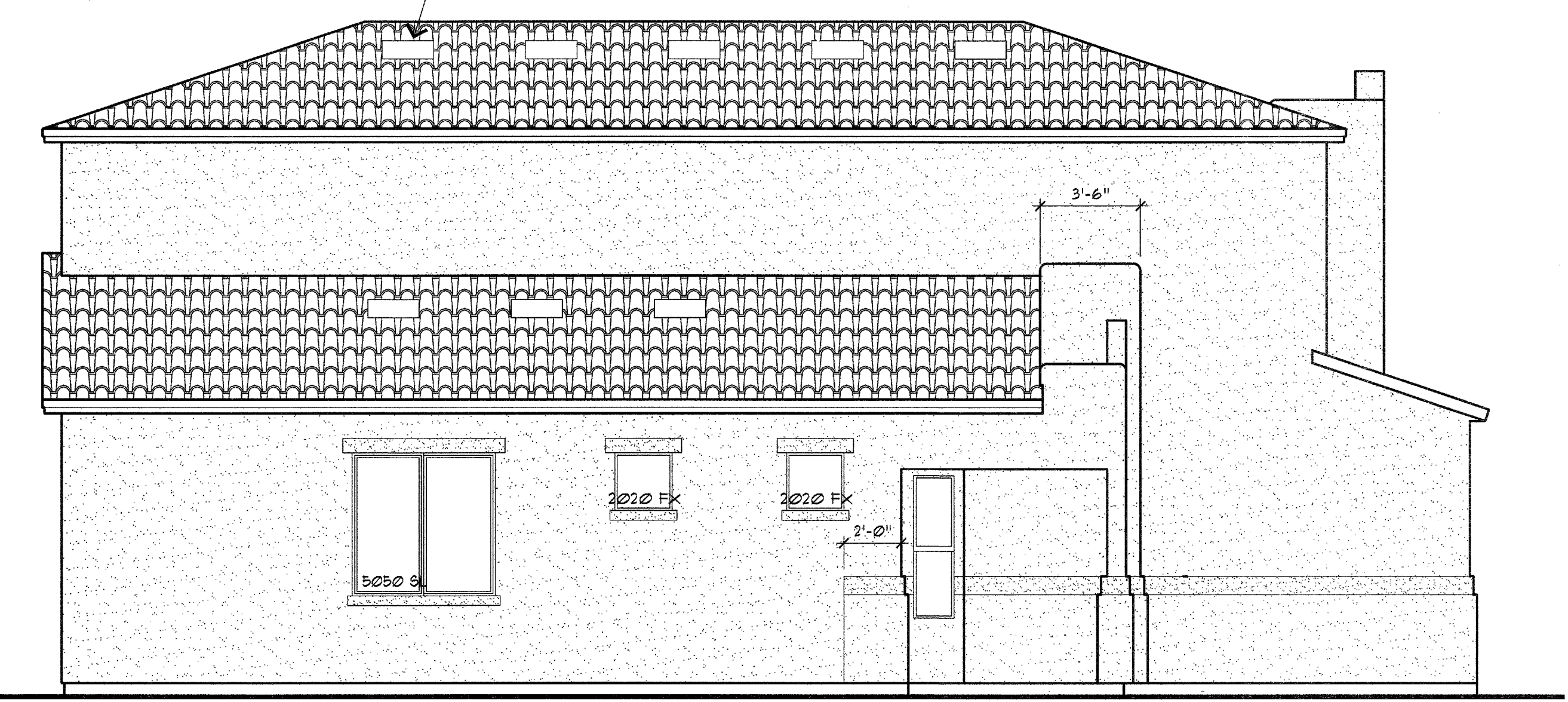


FRONT ELEVATION "C"



RIGHT ELEVATION

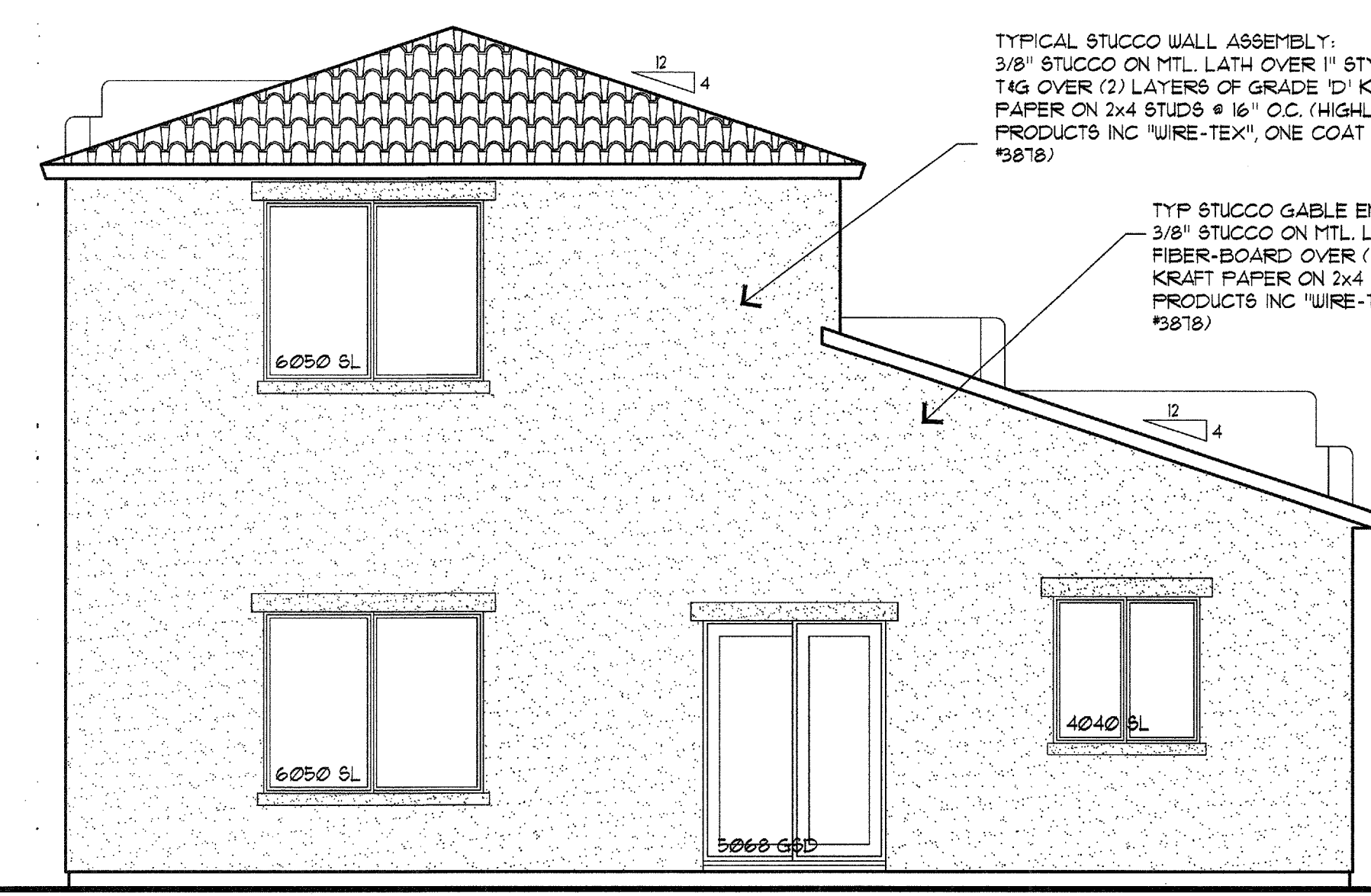
DORMER VENTS, (8) REQ'D
 FOR DETAILS, REFER TO SHEET A41



LEFT ELEVATION

TYPICAL STUCCO WALL ASSEMBLY:
 3/8" STUCCO ON HTL. LATH OVER 1" STYRO-FOAM
 TAG OVER (2) LAYERS OF GRADE 'D' KRAFT
 PAPER ON 2x4 STUDS @ 16" O.C. (HIGHLAND
 PRODUCTS INC 'WIRE-TEX', ONE COAT SYSTEM, E.R.
 #3878)

TYP STUCCO GABLE END ASSEMBLY:
 3/8" STUCCO ON HTL. LATH OVER 1" BLACK
 FIBER-BOARD OVER (2) LAYERS OF GRADE 'D'
 KRAFT PAPER ON 2x4 STUDS @ 16" O.C. (HIGHLAND
 PRODUCTS INC 'WIRE-TEX', ONE COAT SYSTEM, E.R.
 #3878)



REAR ELEVATION