

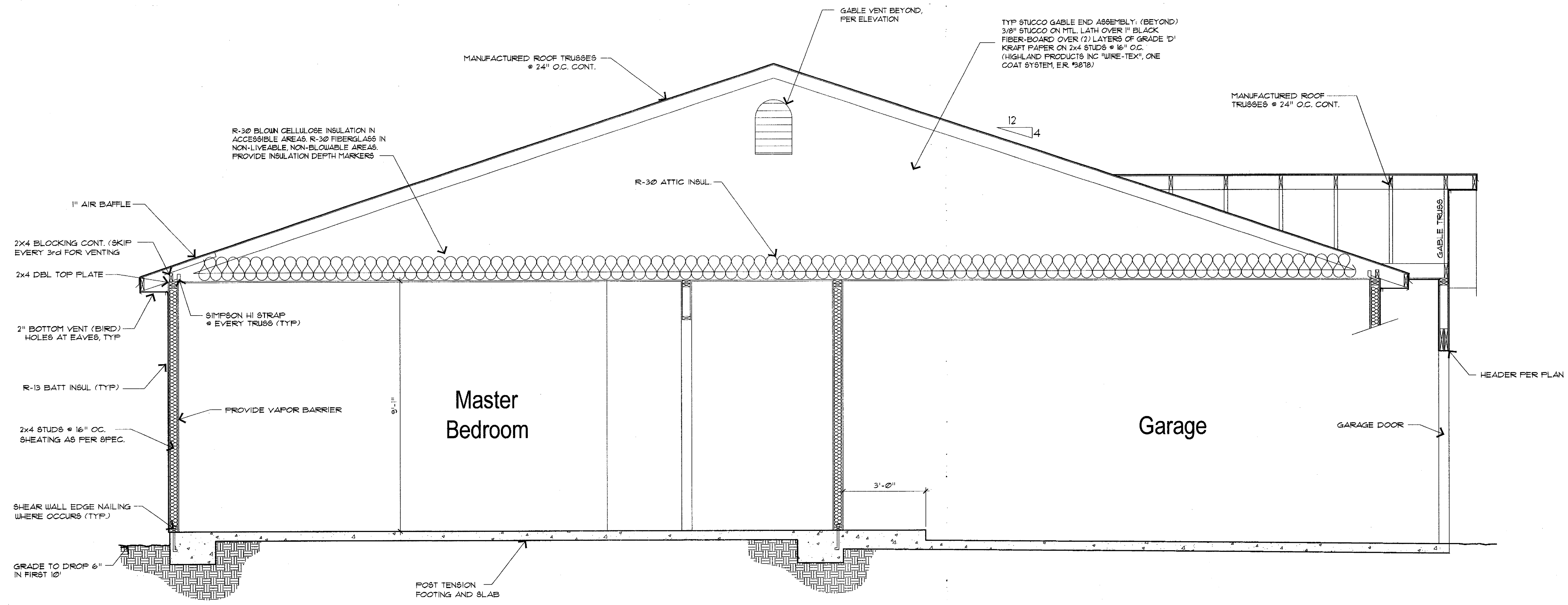
REVISIONS:

A NEW RESIDENCE FOR
 LIBERTY HOMES
 BROADWAY @ SAN MARCOS

HOUSE SECTION
 1045 CORDOBA

DATE: 03.03.2007
 DRAWN: MDW 04.19.05
 MODIFIED:
 CHECKED:
 FILE: San Marc-1045-041905

SITE NO:
 SM
 A4.1
 SHEET NO:



HOUSE SECTION
 SCALE: 1/2"=1'

ROOF VENTILATION CALCULATION

-A' ELEVATION

$\frac{1720 \text{ SF}}{300} = \frac{5.73}{.73} = 7.8 \text{ VENTS REQUIRED, 8 TO BE PROVIDED}$

** FLAT ROOF NOT INCLUDED IN CALCS (ENTIRE CAVITY FILLED w/ INSULATION) **
 ROOF VENTS ARE DORMER TYPE WITH 9 SF. OF FREE OPEN SPACE EA.
 DORMER VENT MGR: METAL PRODUCTS CO. (OR EQUIVALENT)
 1845 E. MADISON
 PHOENIX, AZ 85034

16x24 GABLE END VENTS (WHEN USED) = 3 SQ FT EACH UNIT, CAN BE USED TO REPLACE (3) DORMER VENTS EACH.

TOTAL VENTS: 8 REQUIRED
 PER 2003 I.R.C. SECTION R806.2

-B' ELEVATION

$\frac{1720 \text{ SF}}{300} = \frac{5.73}{.73} = 7.8 \text{ VENTS REQUIRED, 8 TO BE PROVIDED}$

** FLAT ROOF NOT INCLUDED IN CALCS (ENTIRE CAVITY FILLED w/ INSULATION) **
 ROOF VENTS ARE DORMER TYPE WITH 9 SF. OF FREE OPEN SPACE EA.
 DORMER VENT MGR: METAL PRODUCTS CO. (OR EQUIVALENT)
 1845 E. MADISON
 PHOENIX, AZ 85034

16x24 GABLE END VENTS (WHEN USED) = 3 SQ FT EACH UNIT, CAN BE USED TO REPLACE (3) DORMER VENTS EACH.

TOTAL VENTS: 8 REQUIRED
 PER 2003 I.R.C. SECTION R806.2

-C' ELEVATION

$\frac{1720 \text{ SF}}{300} = \frac{5.73}{.73} = 7.8 \text{ VENTS REQUIRED, 8 TO BE PROVIDED}$

** FLAT ROOF NOT INCLUDED IN CALCS (ENTIRE CAVITY FILLED w/ INSULATION) **
 ROOF VENTS ARE DORMER TYPE WITH 9 SF. OF FREE OPEN SPACE EA.
 DORMER VENT MGR: METAL PRODUCTS CO. (OR EQUIVALENT)
 1845 E. MADISON
 PHOENIX, AZ 85034

16x24 GABLE END VENTS (WHEN USED) = 3 SQ FT EACH UNIT, CAN BE USED TO REPLACE (3) DORMER VENTS EACH.

TOTAL VENTS: 8 REQUIRED
 PER 2003 I.R.C. SECTION R806.2